

# Chapter 1. Disassembly & Assembly Guide

---

## 1-3. Disassembly & Assembly

### - Main Section -

#### MS-1 Main Section Disassembly

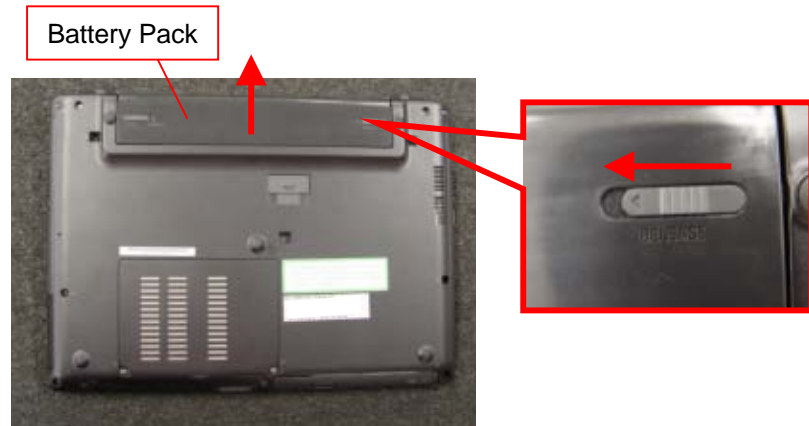
# Battery Pack

1)



Slide the Battery Lock (L) to the UNLOCK side.

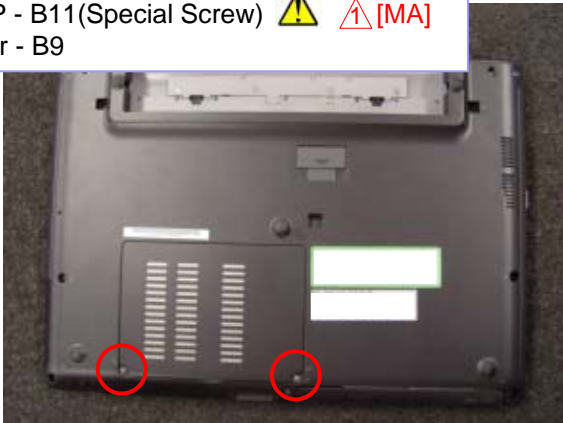
2)



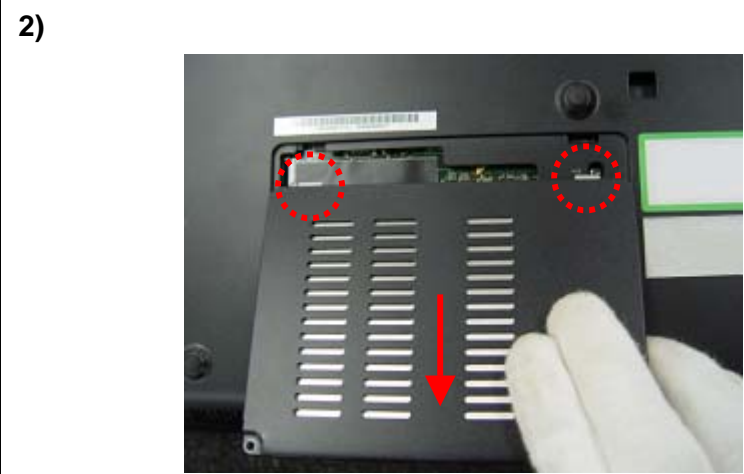
With the Battery Lock (R) moved on the UNLOCK side, remove the Battery Pack.

# Cover (Memory)

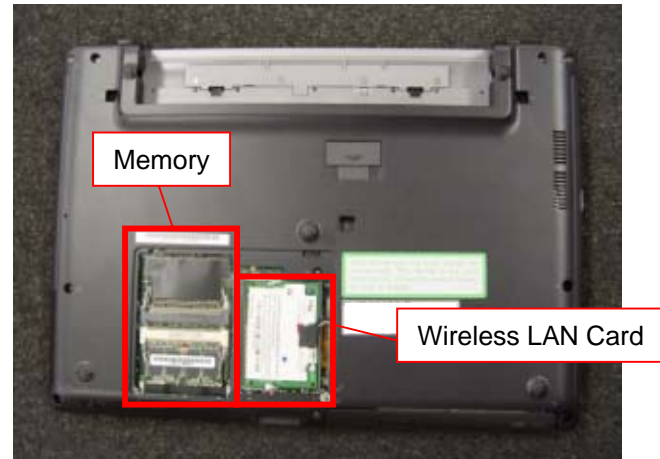
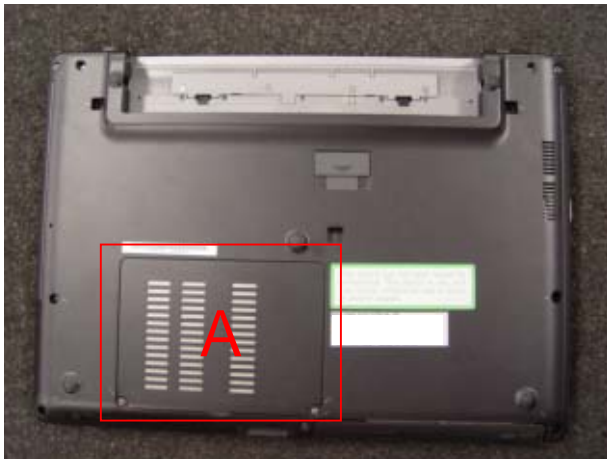
- 1) Screw:  
S240P - B11(Special Screw) ⚠ ⚠ [MA]  
Other - B9



⚠ Remove the two screws.  
\*The type of screw differs by model.



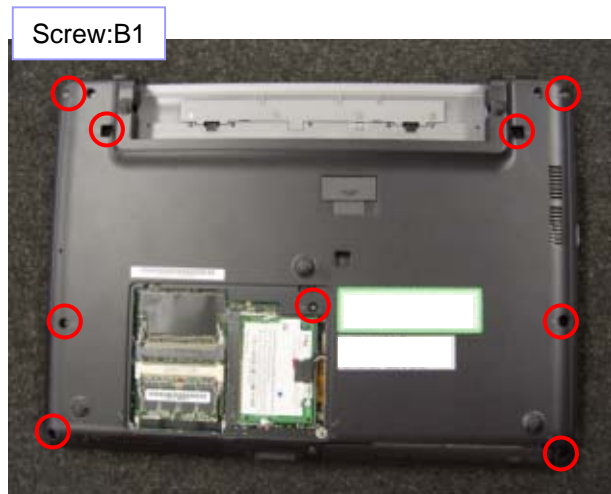
Slide the Cover (Memory) toward the front to remove.  
\*The two detents on the upper side are engaged with the Housing (Bottom).



The Memory and the Wireless LAN Card are located under the Cover in section A.

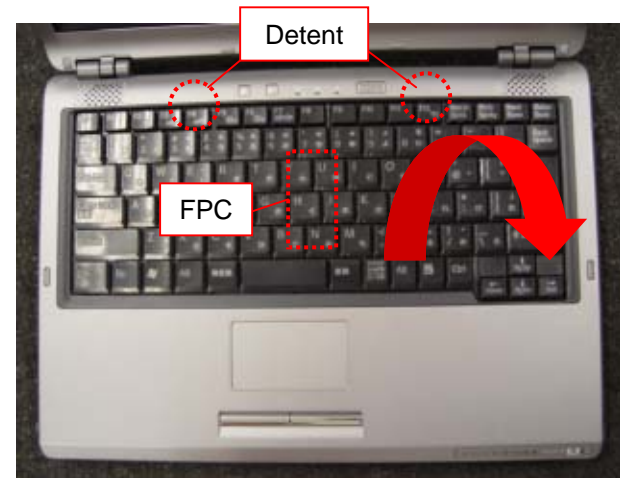
# Keyboard

1)



Remove the nine screws from the back.

2)

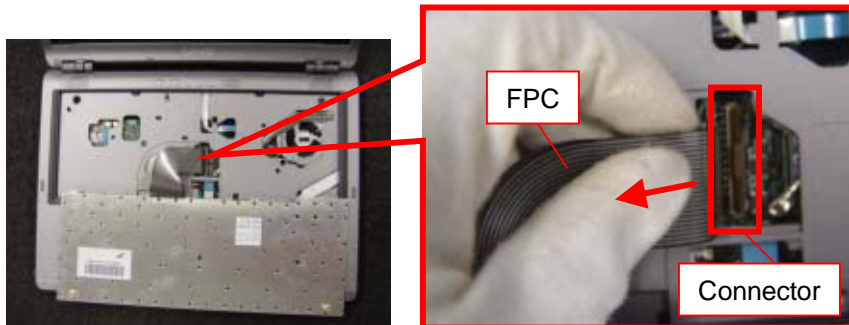


Disengage the two detents with a bamboo spatula, and turn the Keyboard toward the front.

\*The FPC is connected on the back.

\*Push the detents toward the rear to disengage.

3)



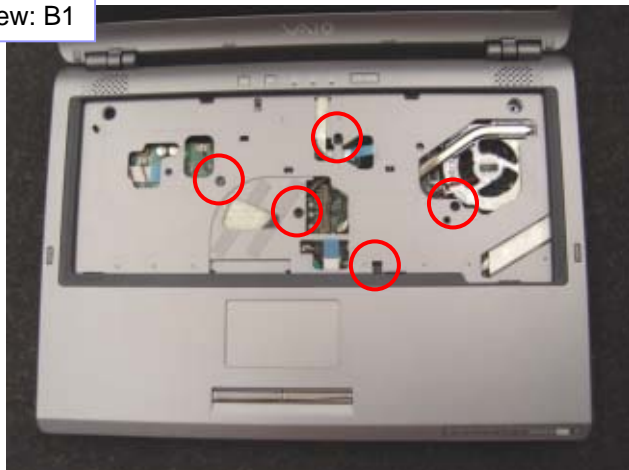
Disconnect the FPC.

\*Raise the Connector to unlock.

# Palmrest

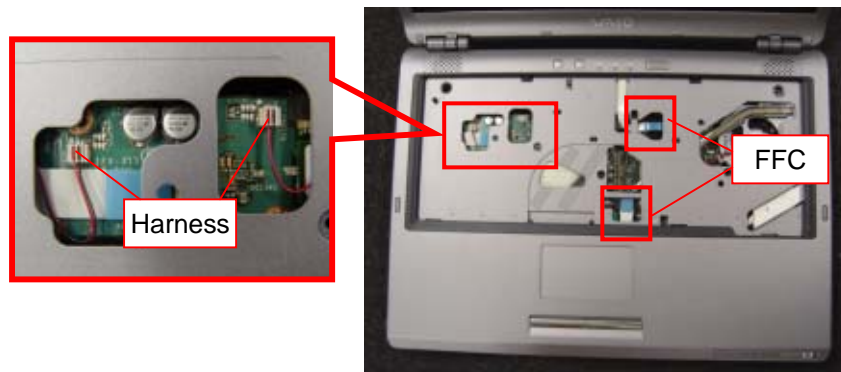
1)

Screw: B1



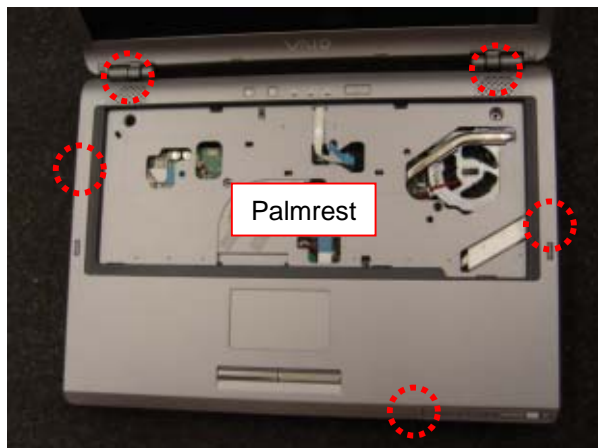
Remove the five screws.

2)



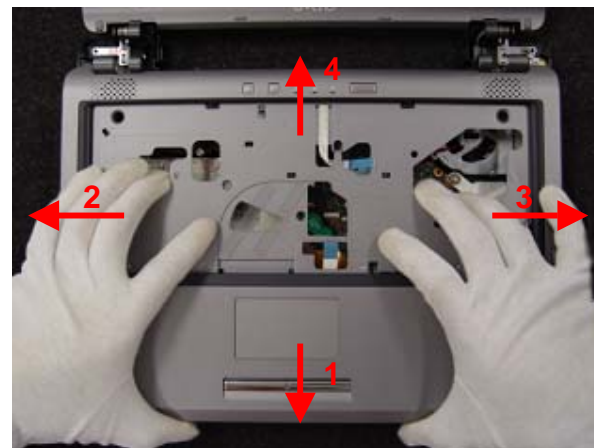
Disconnect the Harness (two places) and the FFC (two places).  
\*Pull off the Harness and the FFC upward.

3)



Disengaging the five detents, remove the Palmrest.  
\*The detents are engaged toward the outside.

Remark



Raising the Palmrest while sliding it a little in the arrow direction in the order of 1, 2, 3, 4, disengage the detents.

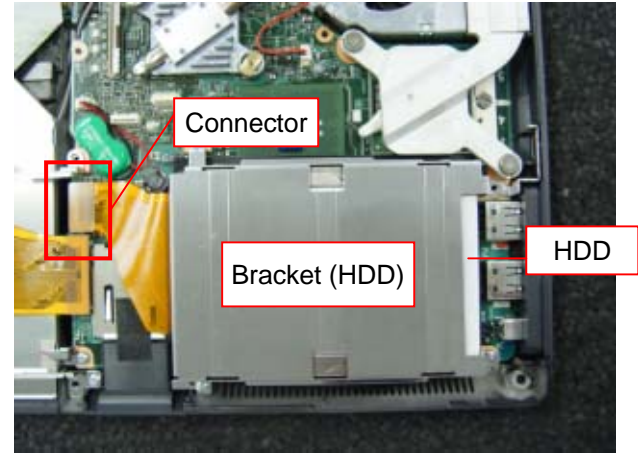
# HDD

1) Screw: B4



Remove the two screws.

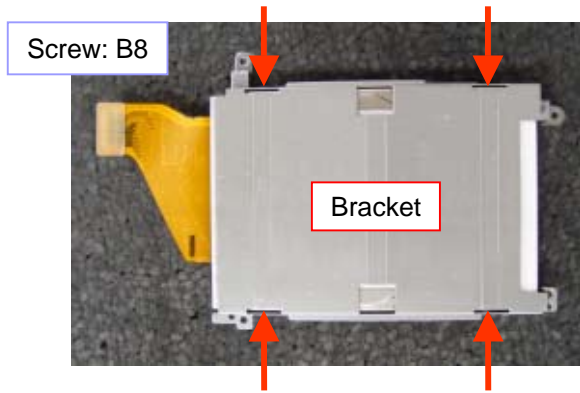
2)



Disconnect the Connector, and remove the HDD.  
\*The HDD is removed together with the Bracket (HDD).

# Parts of the HDD

1)



Remove the four screws, and then the Bracket (HDD).

2)



Remove the FPC.

## Remark

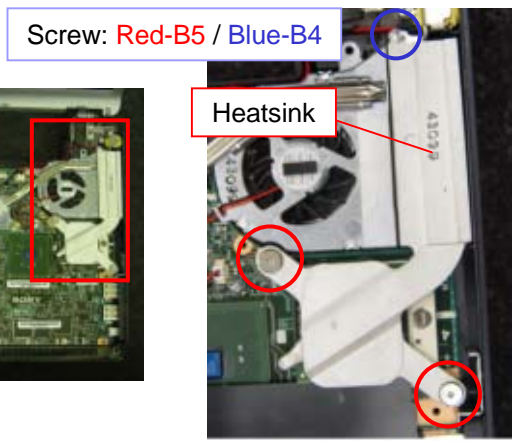


Disconnect the Connector portion little by little with a tweezers.

**\*Be careful not to bend the pins.**

# Heatsink

1)



Remove the three screws, and then the Heatsink.

Remark



The Spring is attached under the Screw.



# PC Card Connector

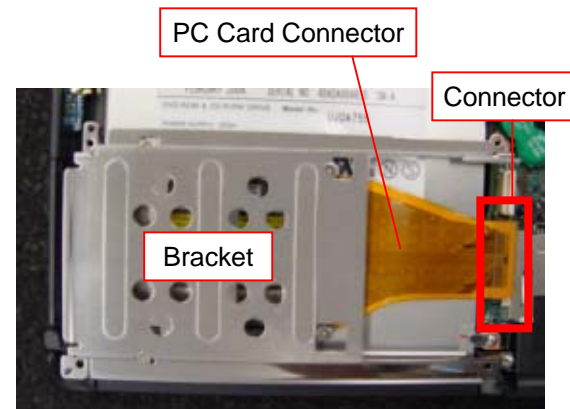
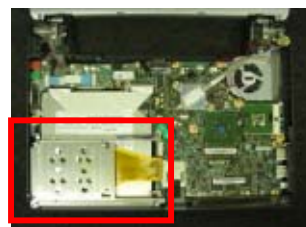
1)

Screw: B4



Remove the one screw.

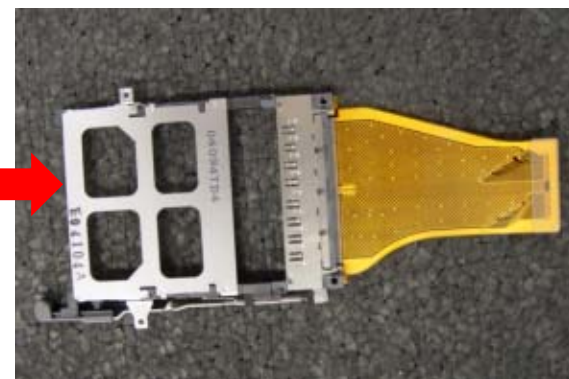
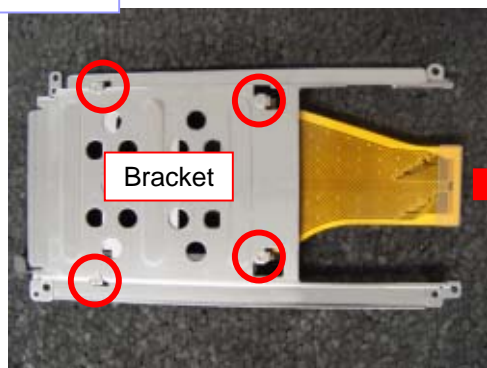
2)



Disconnect the Connector, and remove the PC Card Connector.  
 \*The Bracket is removed together.  
 \*The PC Card Connector is located under the Bracket.

3)

Screw: B10

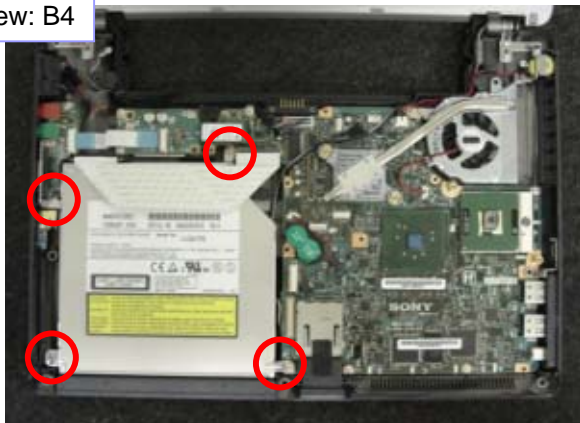


Remove the four screws, and then the Bracket.

# Optical Disc Drive

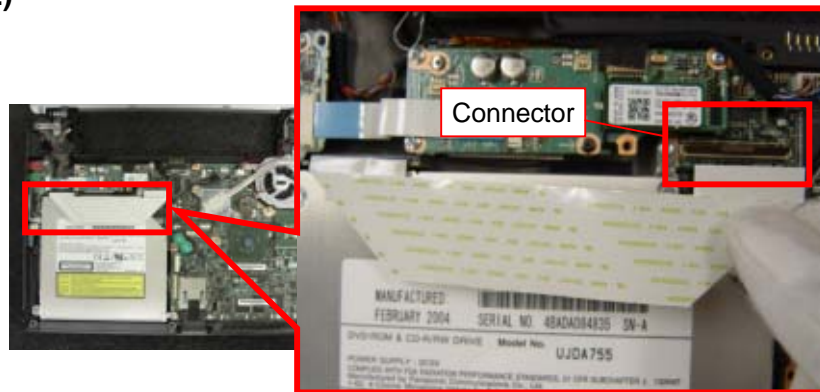
1)

Screw: B4



Remove the four screws.

2)



Disconnect the FFC.

**\*Raise the Connector and release the lock.**

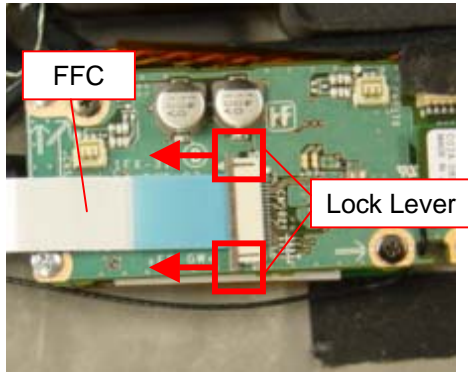
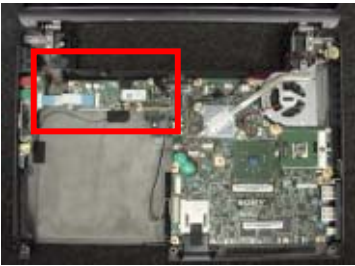
3)



Remove the Optical Disc Drive.

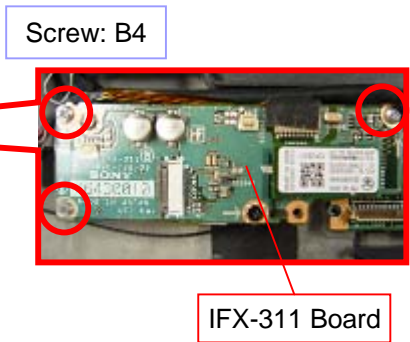
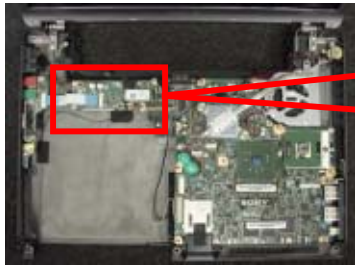
# IFX-311 Board, IFX-331 Board

1)



Slide the both ends of the lock lever in the arrow direction to unlock, and disconnect the FFC.

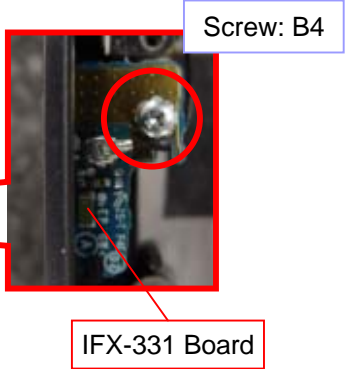
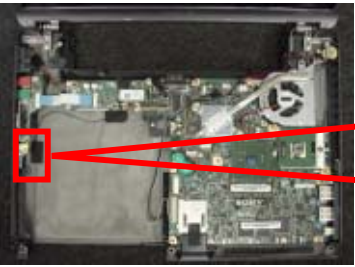
2)



Remove the three screws, and then the IFX-311 Board.

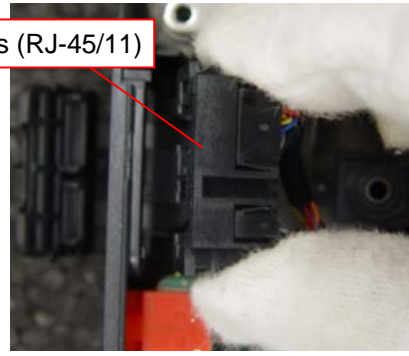
3)

**Bluetooth Model**



Remove the one screw, and then the IFX-331 Board.

4)



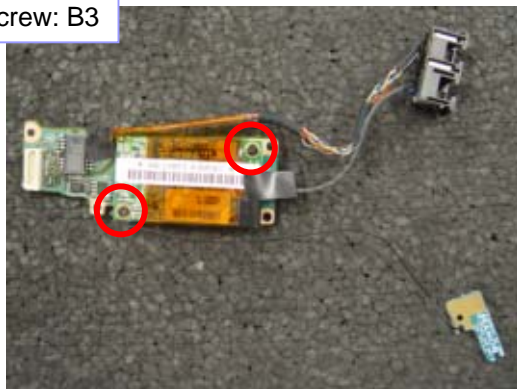
Remove the Harness (RJ-45/11).

# Parts of the IFX Board

Common

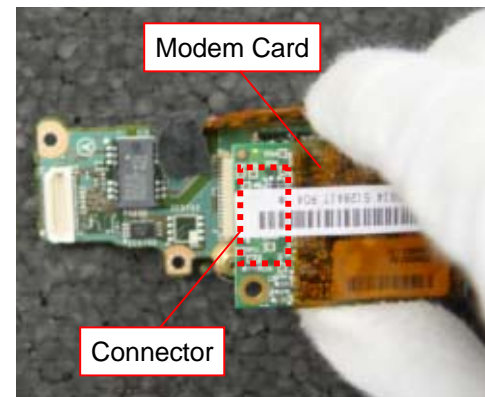
1)

Screw: B3



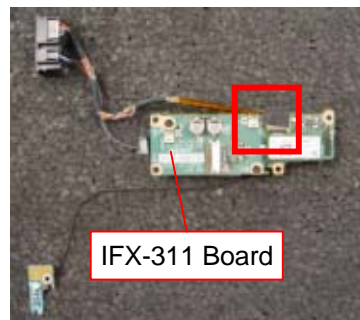
Remove the two screws.

2)



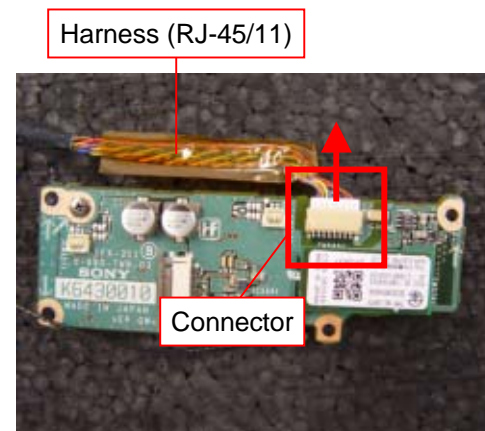
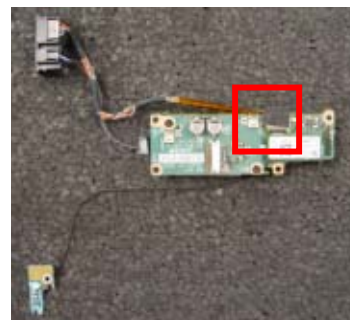
Remove the Modem Card.  
\*The Connector is located on the back.

3)



Turn over the IFX-311 Board, and peel off the Sheet.

4)



Disconnect the Connector in the arrow direction,  
and remove the Harness (RJ-45/11).

# Parts of the IFX Board

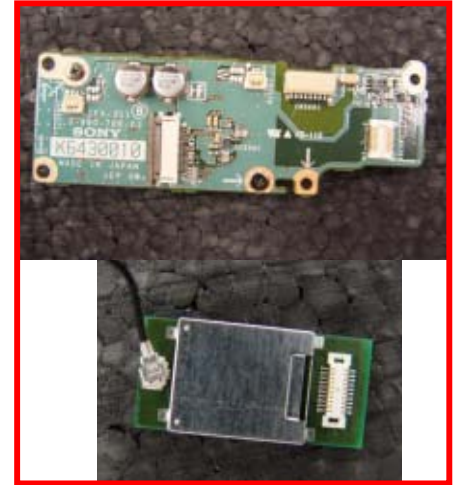
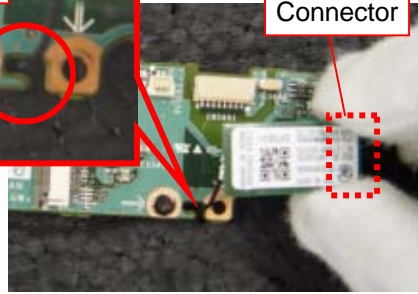
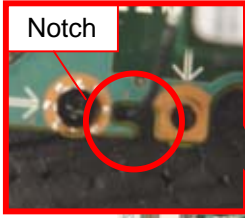
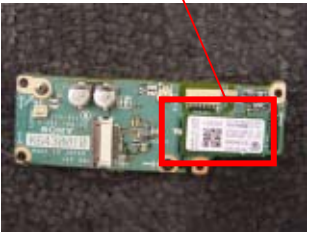
**Bluetooth Model**

1)

Bluetooth Module

Notch

Connector

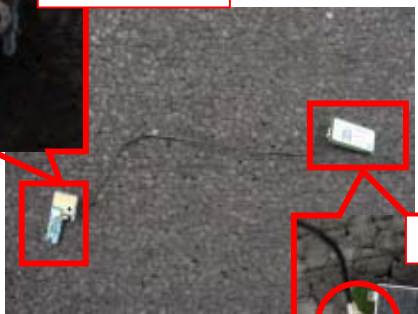


Remove the Bluetooth Module.  
\*The Connector is located on the back.  
\*The Coaxial Cable is hooked on the notch.

2)

IFX-331 Board

Bluetooth Module

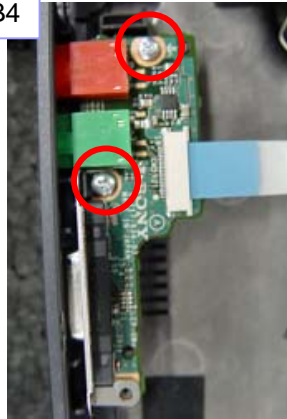


Disconnect the Coaxial Cable from the IFX-331 Board and the Bluetooth Module respectively.  
\*Disconnect the Connector vertically.

# CNX-261 Board

1)

Screw: B4

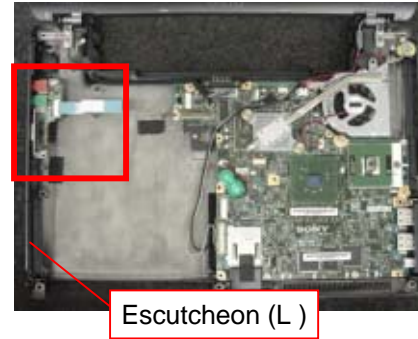


Remove the two screws.

2)

Connector

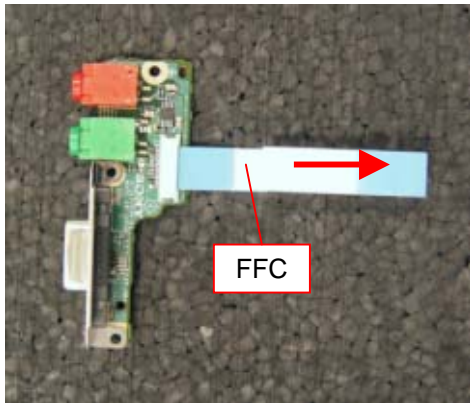
CNX Board



Escutcheon (L)

Remove the CNX Board.  
\*The Connector is fitted in the Escutcheon (L).

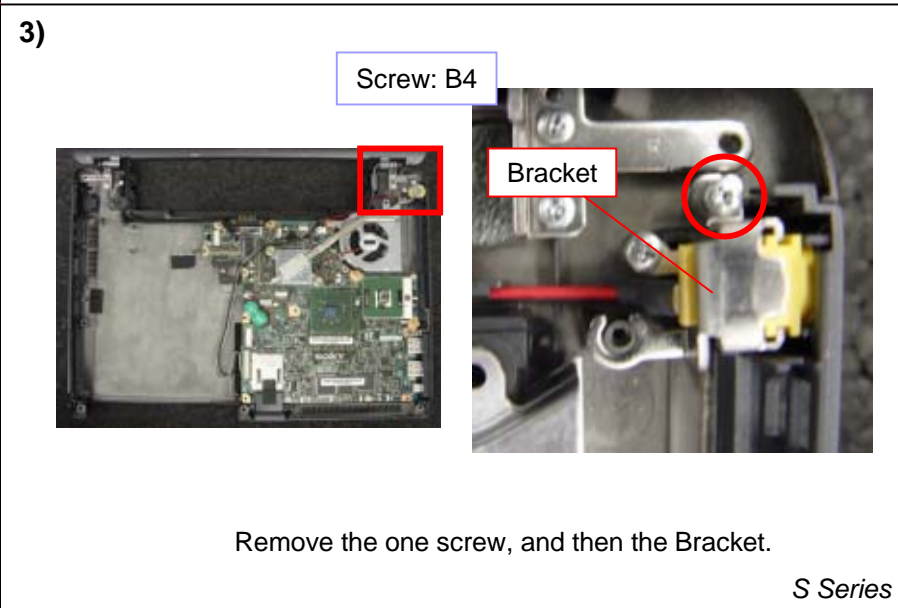
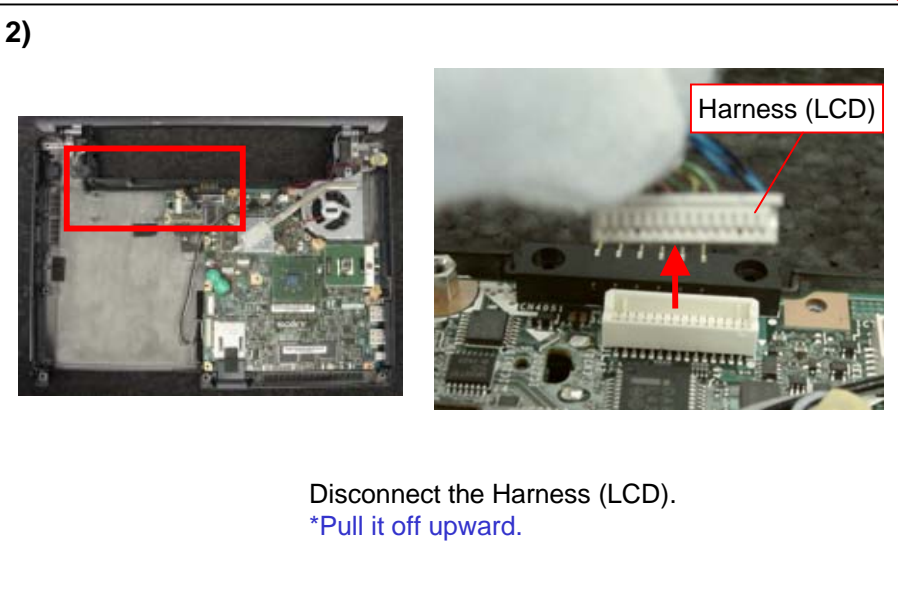
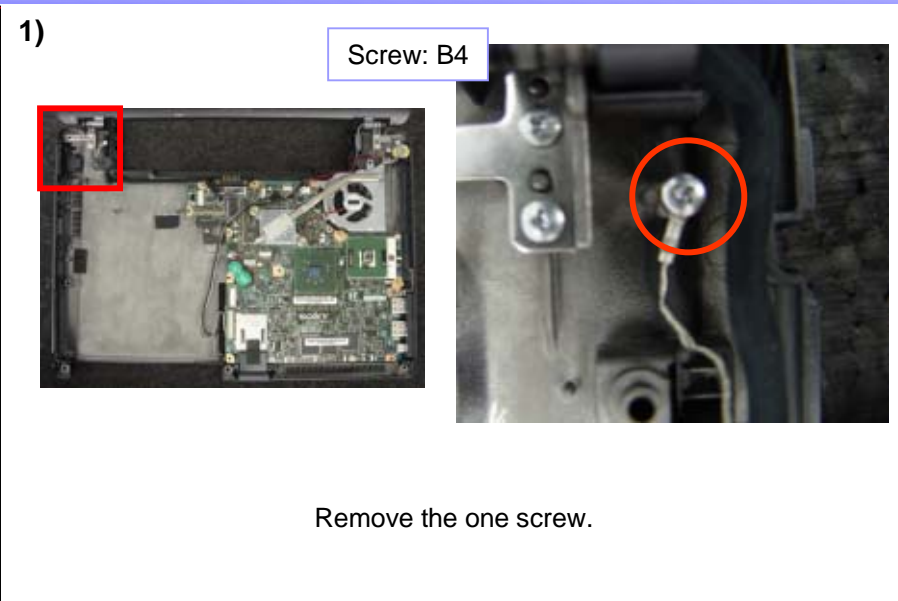
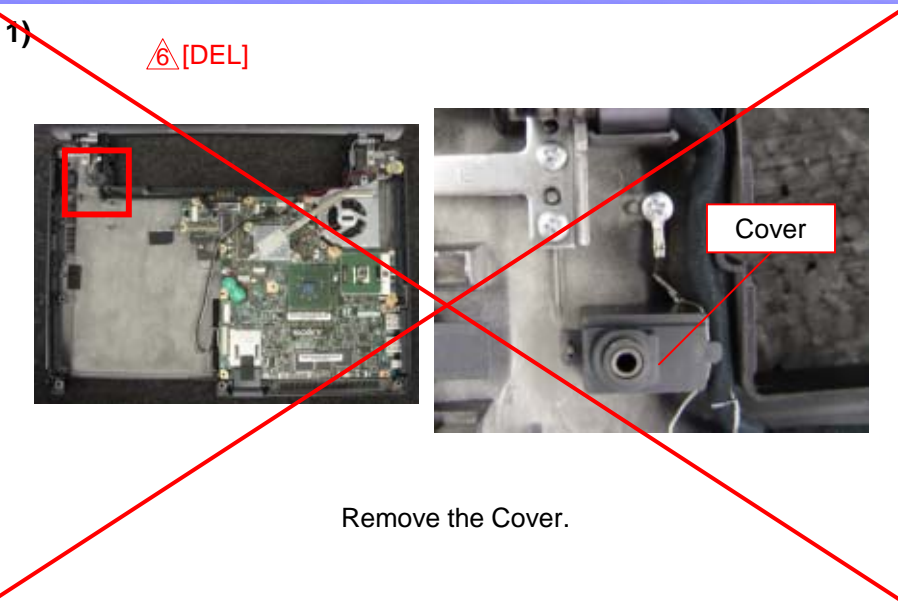
3)



FFC

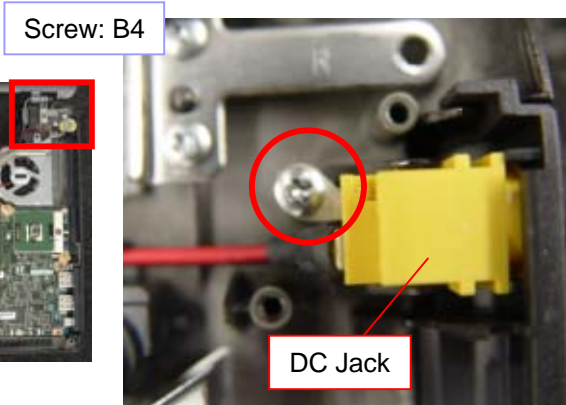
Disconnect the FFC.  
\*Pull it off in the arrow direction.

# Mother Board -1



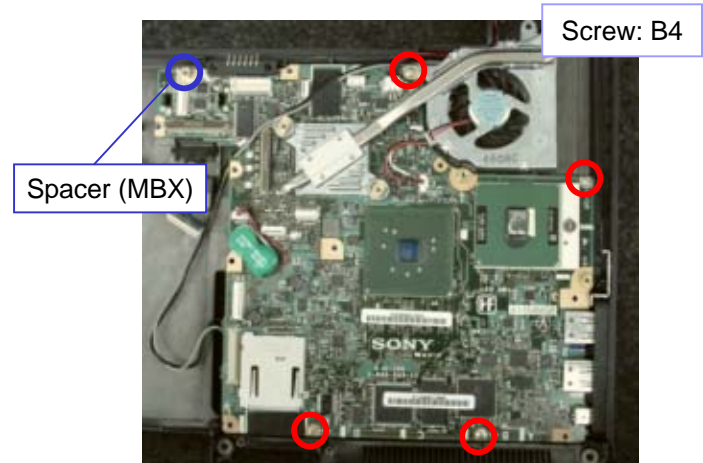
# Mother Board -2

4)



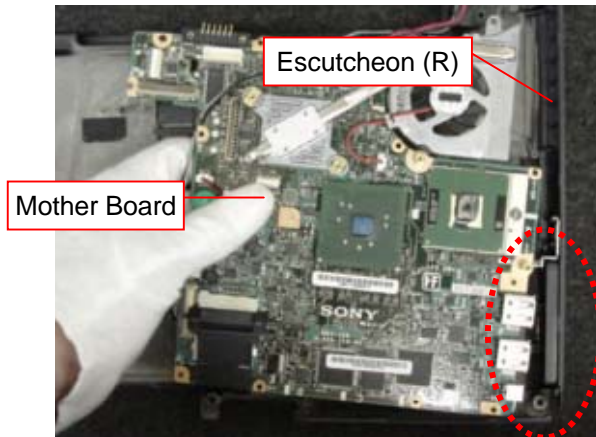
Remove the one screw, and then the DC Jack.

5)



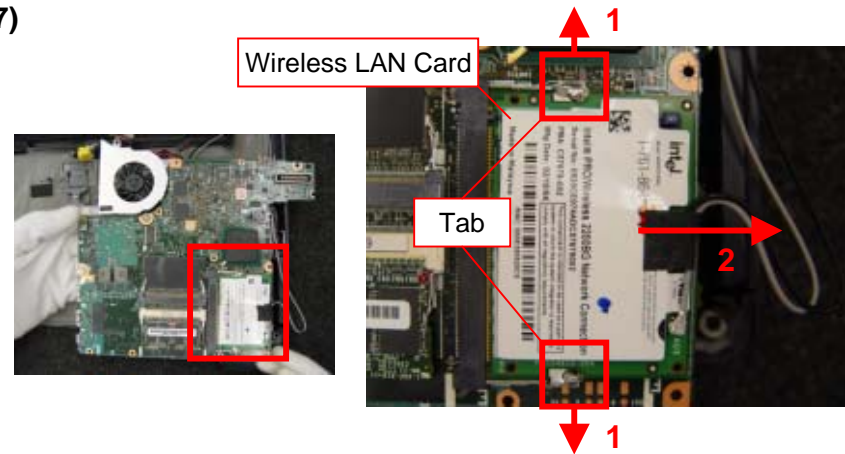
Remove the four screws and the Spacer (MBX) (one location).  
 \*Remove the Spacer (MBX) using the 4 mm socket wrench.

6)



Remove the Mother Board.  
 \*The Connector is fitted in the Escutcheon (R).

7)



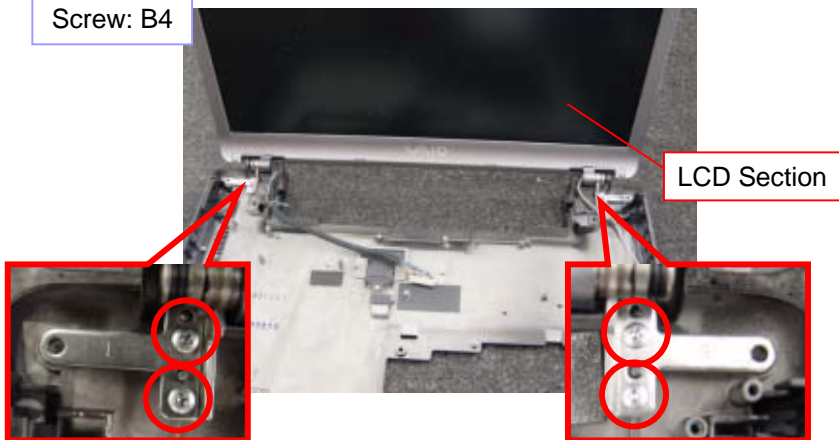
Turn over the Mother Board, open the tabs outward (arrow 1), and pull off the Wireless LAN Card diagonally upward (arrow 2).



# LCD Section

1)

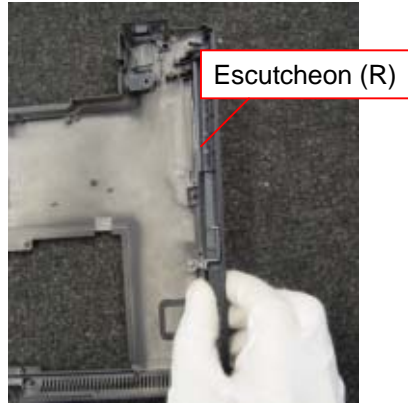
Screw: B4



Remove the four screws, and then the LCD Section upward.

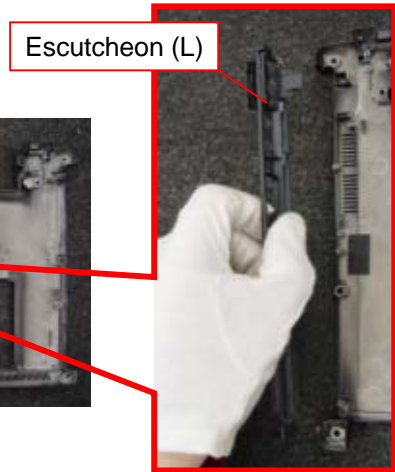
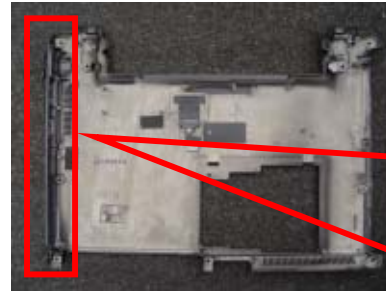
# Parts of the Housing (Bottom)

1)



Remove the one Escutcheon (R).

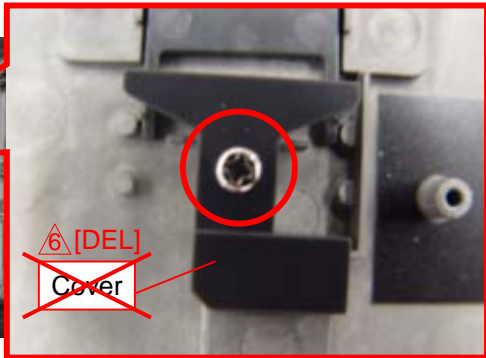
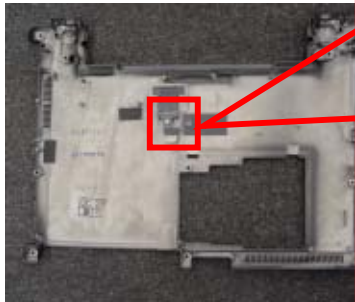
2)



Remove the one Escutcheon (L).

3)

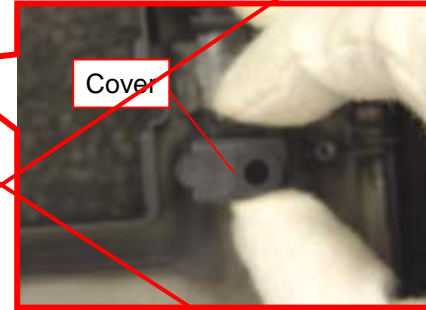
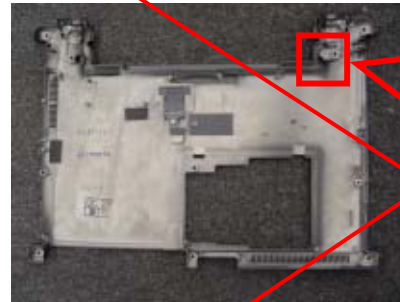
Screw: B4



~~Remove the one screw and then the Cover.~~

4)

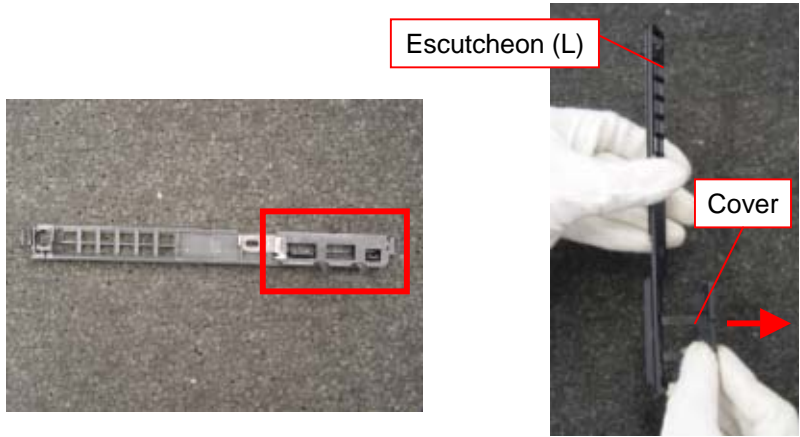
~~⚠ [DEL]~~



~~Remove the one Cover.~~

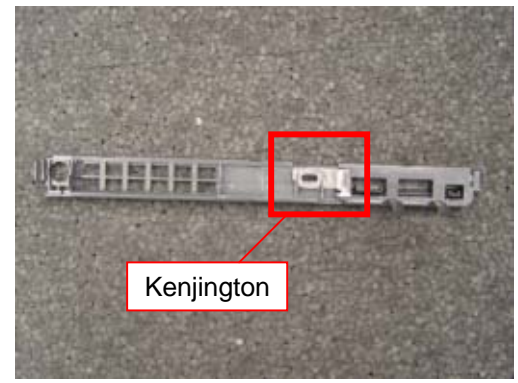
# Parts of the Escutcheon (L/R)

1)



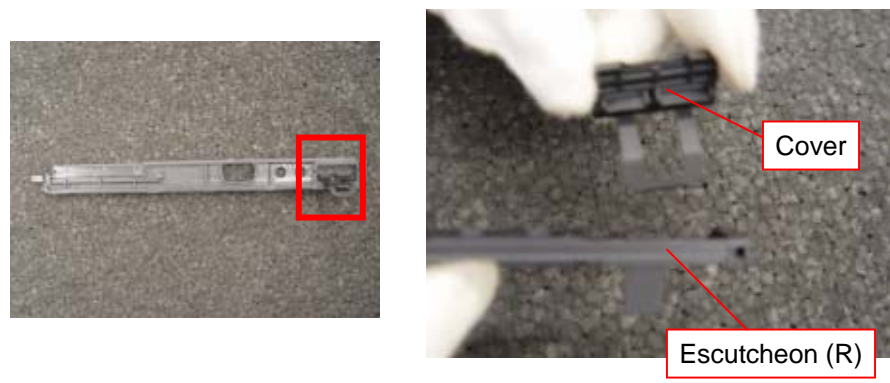
Remove the Cover from the Escutcheon (L).

2)



Remove the Kenjington from the Escutcheon (L).



3)



Remove the Cover from the Escutcheon (R).

# Update History

[**ADD**]---Addition [DEL]---Deletion [**CHG**]---Change [**COR**]---Correction [**MA**]---Model Addition

Date		Contents	Version No.
2004.09.17		[MA] (Page 3)	2.00
2005.01.06		[DEL] Parts (Page 15,18)	3.00