

Chapter 1. Disassembly & Assembly Guide

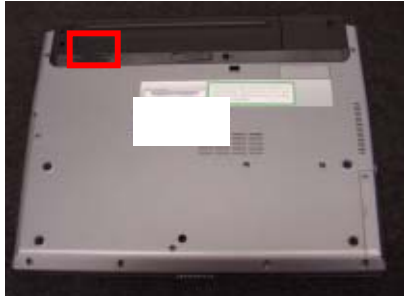
1-3. Disassembly & Assembly

- **Main Section** -

MS-1 Main Section Disassembly

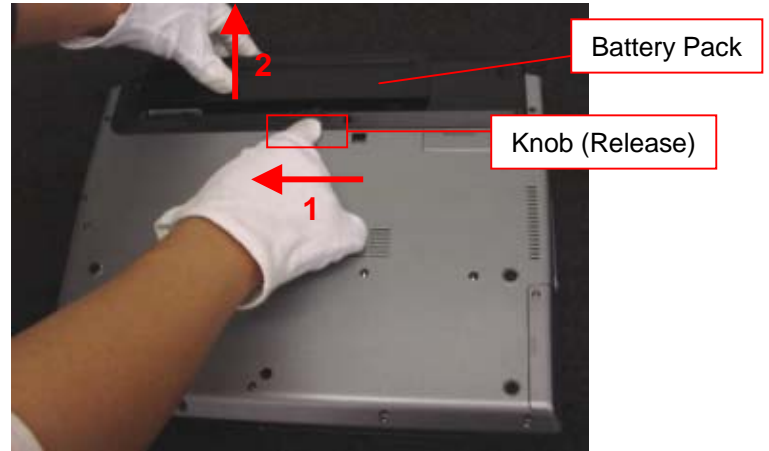
Battery Pack

1)



Move the Knob (L) to the UNLOCK side.

2)



With the Knob (Release) moved on the Unlock side, remove the Battery Pack.

HDD

1)

Screw: B10



Remove the screw.

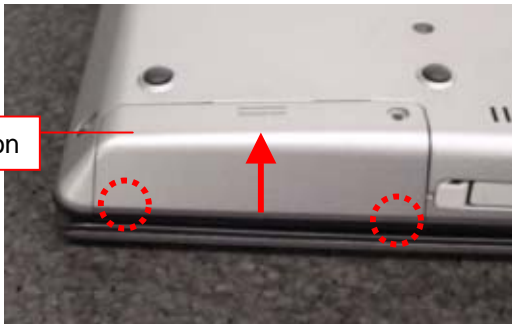
2)



Pull out the HDD in the direction of the arrow.

Remark

Escutcheon



The Escutcheon is engaged with the two detents on the Main Unit. It is recommended to remove the HDD by lifting the Escutcheon lightly in the direction of the arrow to disengage the detents.

Parts of the HDD-1

1)

Screw: B18



Remove the four screws.

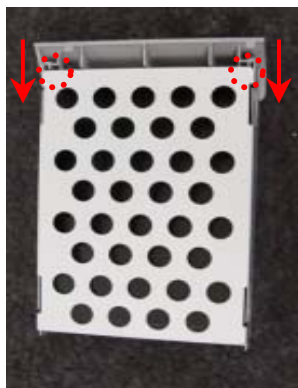
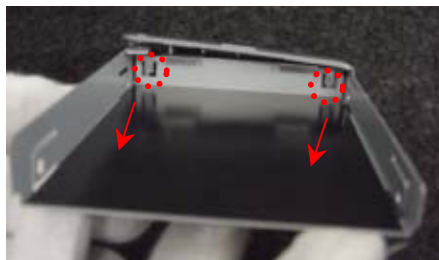
2)



Remove the HDD in the direction of the arrow.

*Handle only by sides of base so that the HDD does not be damaged.

3)



Press the detent (two places) in the direction of the arrow.

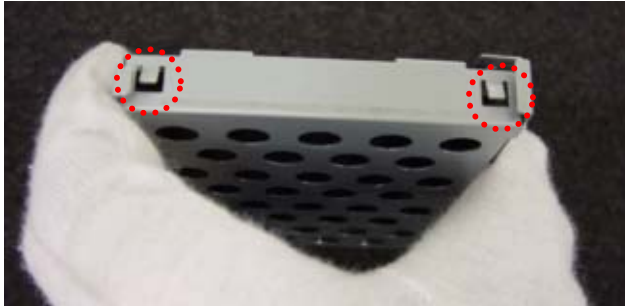
4)



Remove the Escutcheon.

Parts of the HDD-2

5)



Put back the detent (two places) in the original position.

Optical Disc Drive

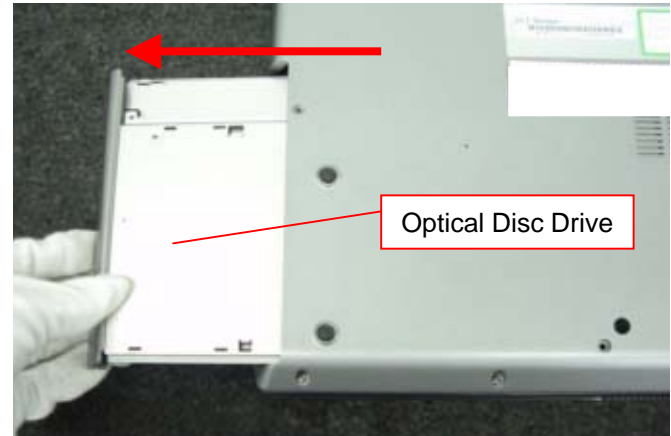
1)

Screw: B10



Remove the two screws.

2)



Remove the Optical Disc Drive.

Keyboard-1

1)



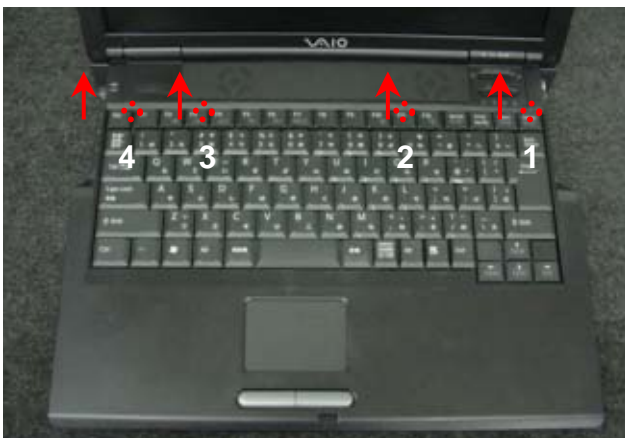
Remove the screw.

2)



Turn over the Main Unit, and open the LCD Section.

3)



Move the detent (four places) in the direction of the arrow with a thin tool and disengage them.

***Be careful not to damage the Keyboard.**

***It is recommended to disengage the detents from right side.**

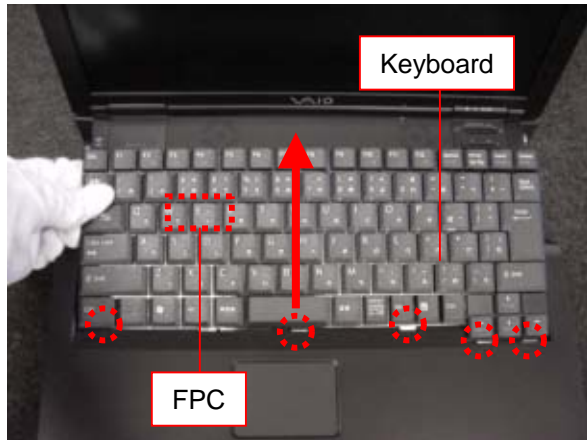
Remark



Detents are located between the Esc and F1 Key, under the F3, F11, and Delete Key.

Keyboard-2

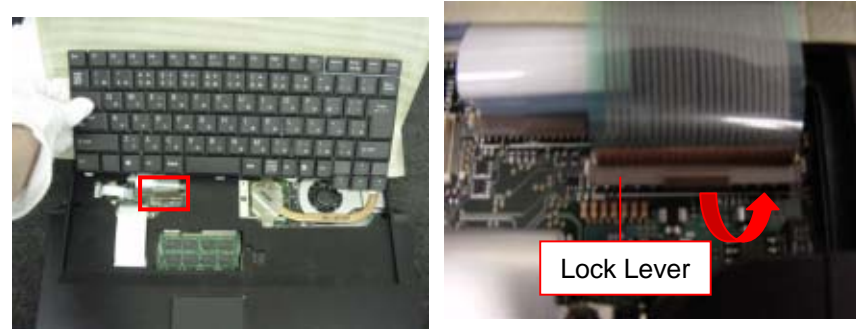
4)



Move the Keyboard in the direction of the arrow to release the detent on the front.

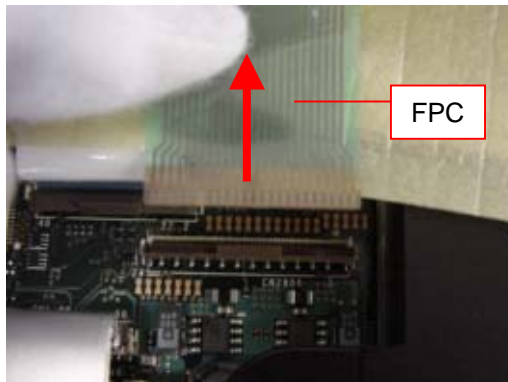
*The FPC is on the backside.

5)



Raise the lock lever in the direction of the arrow and release the lock.

6)

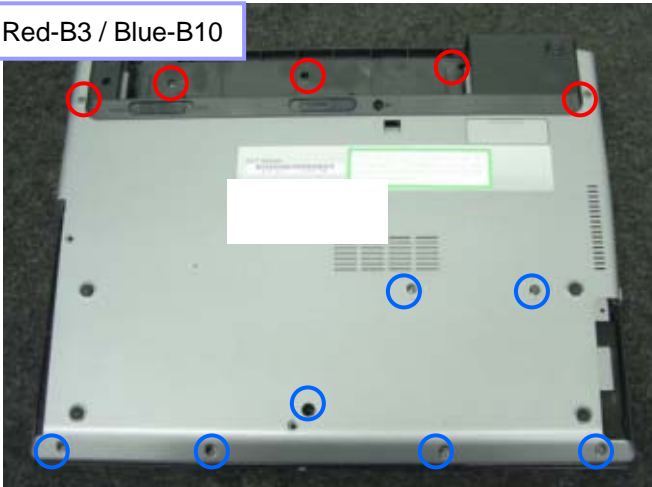


Remove the FPC, and then the Keyboard.

Palmrest-1

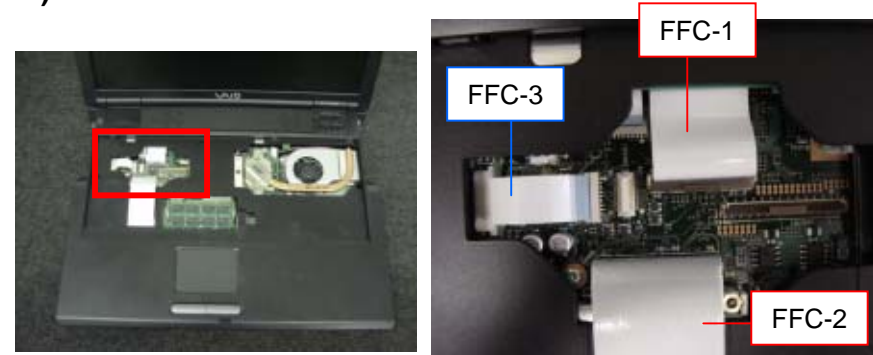
1)

Screw: Red-B3 / Blue-B10



Remove the 12 screws on the bottom.

2)



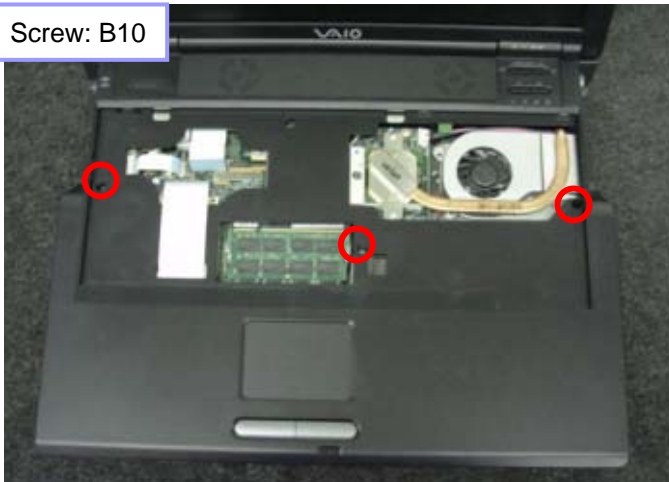
Disconnect the FFC (three places).

*FFC-1/FFC-2: Raise the lock lever to release the lock.

*FFC-3: Pull out the FFC vertically.

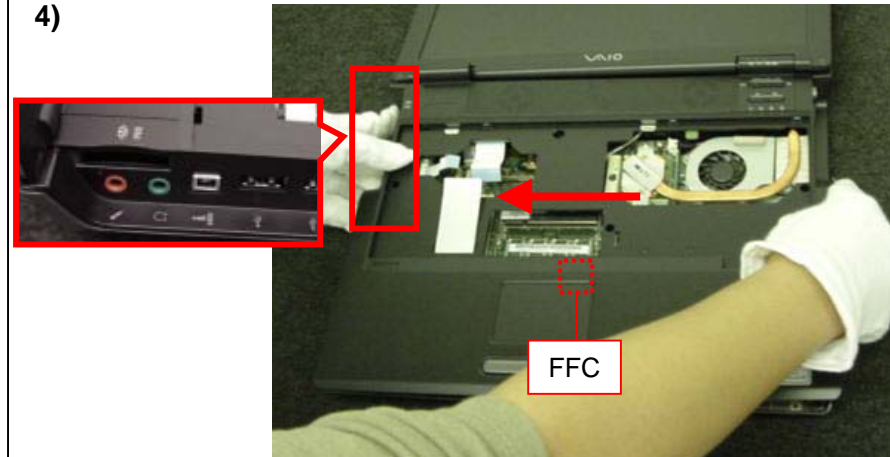
3)

Screw: B10



Remove the three screws.

4)



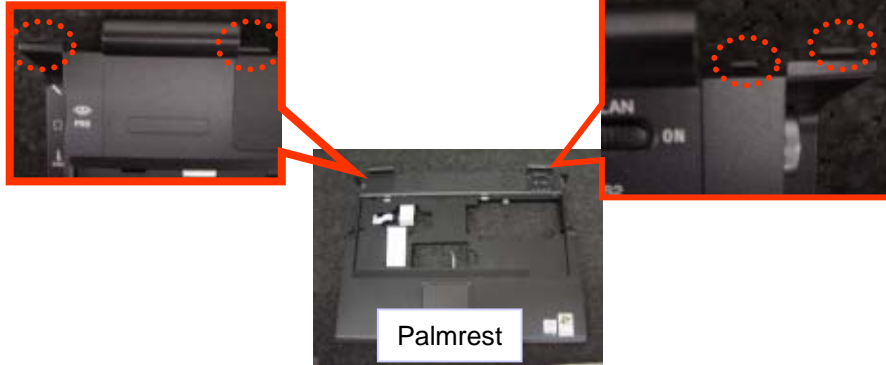
Remove the Palmrest by pushing it toward the left.

* The rear left of the Palmrest is engaged with the connectors and detents.

* The FFC is connected on the backside.

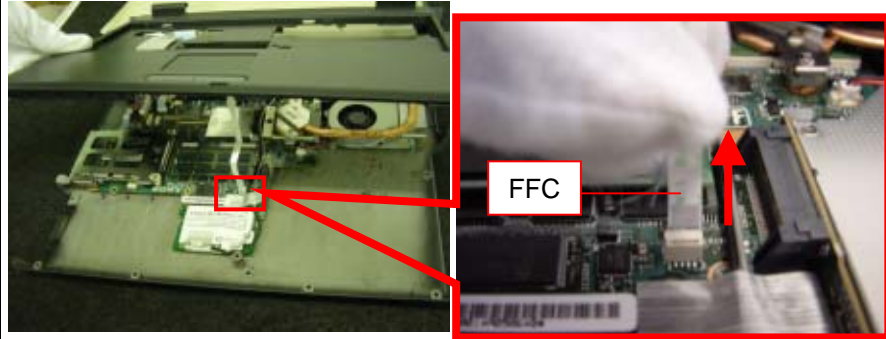
Palmrest-2

Remark



Position of the Detent

5)

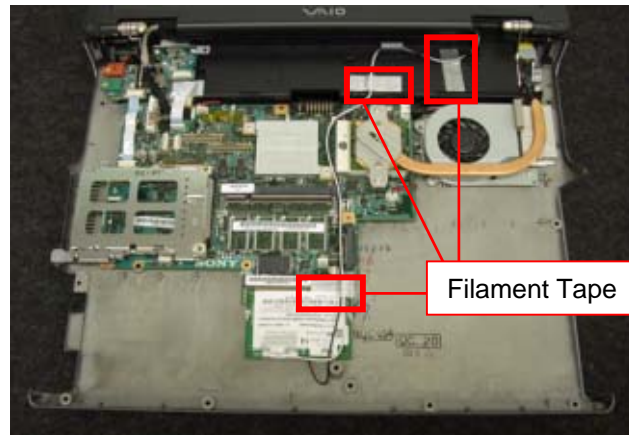


Pull out the FFC (one location) in the direction of the arrow.

Wireless LAN Card

Wireless LAN Model

1)

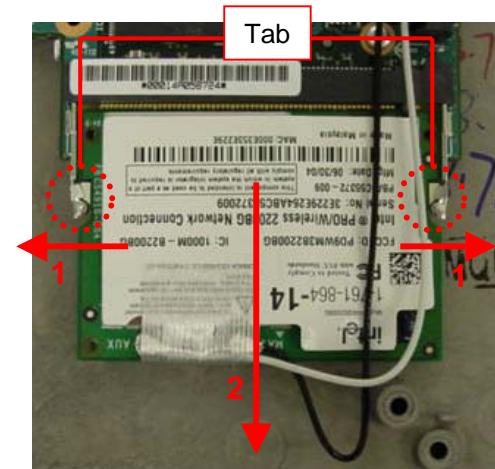


Peel off the Filament Tape (three places).
*Filament Tape: 12X30

2)

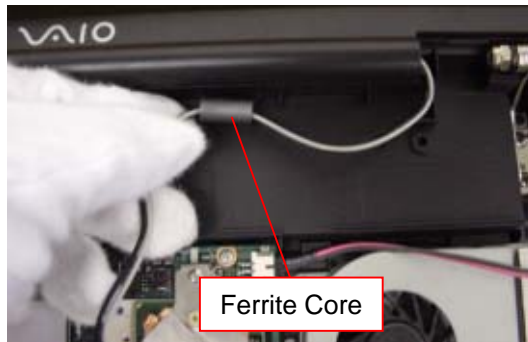


Wireless LAN Card



Outspread the tabs (two places) simultaneously to unlock,
and remove the Wireless LAN Card in the direction of the arrow.

3)

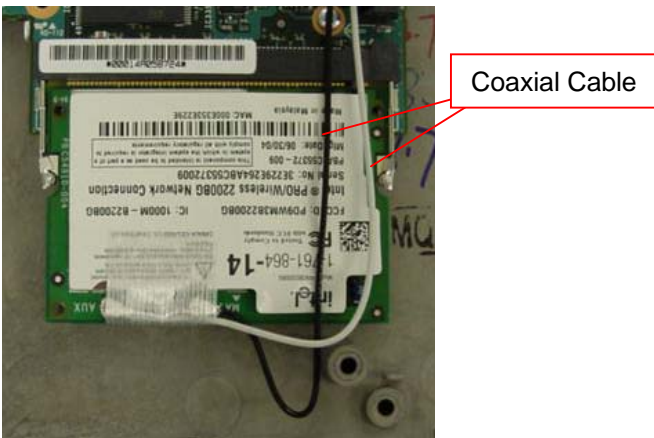


Remove the Ferrite Core portion.

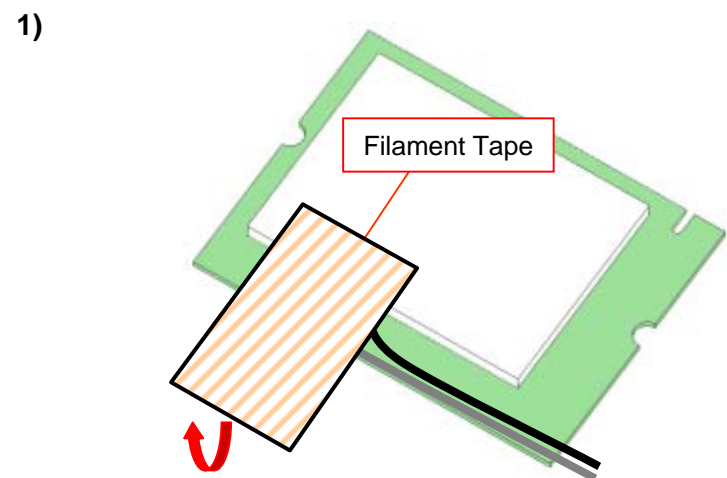
Parts of the Wireless LAN Card

Wireless LAN Model

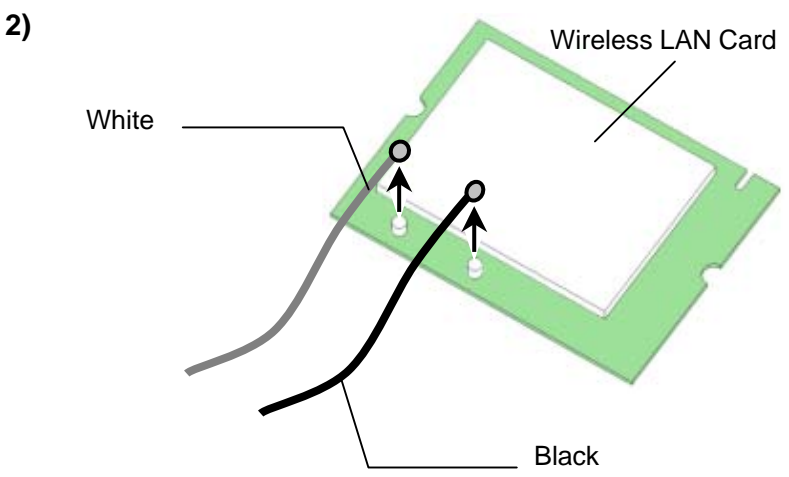
Remark



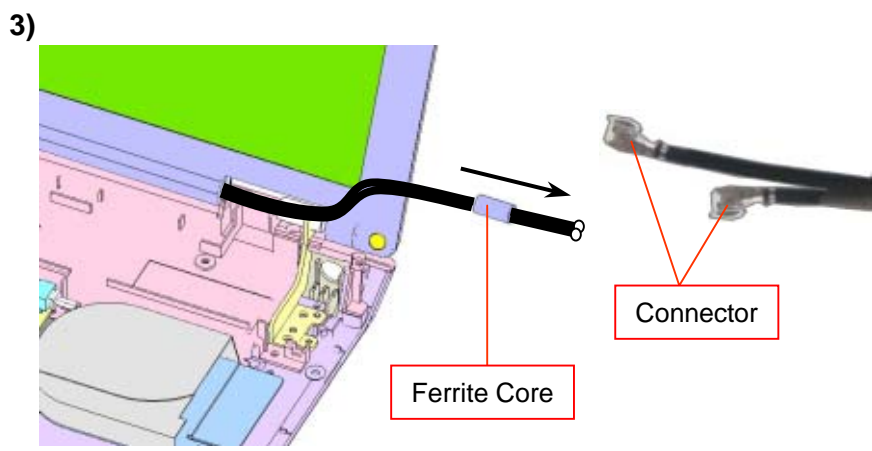
If you do not exchange the Wireless LAN Card or the [Wireless LAN]-related part, perform the work without disconnecting the Coaxial Cables.



Peel off the Filament Tape.



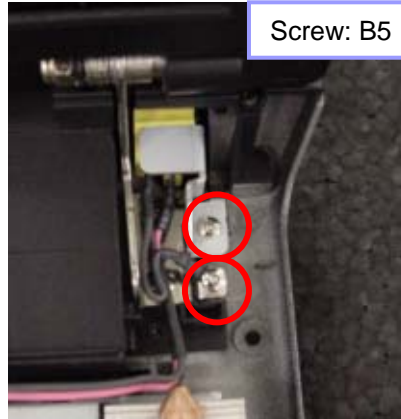
Disconnect the Coaxial Cables.
 *Hold the connector, and pull out it directly above to disconnect it.



Remove the Ferrite Core (one place).
 * Pass the Cable one by one.

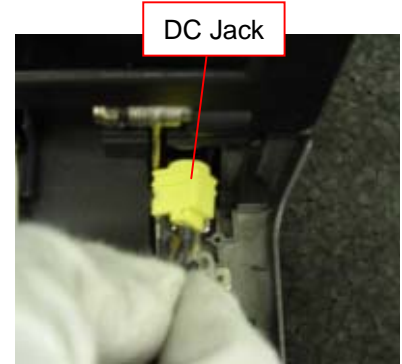
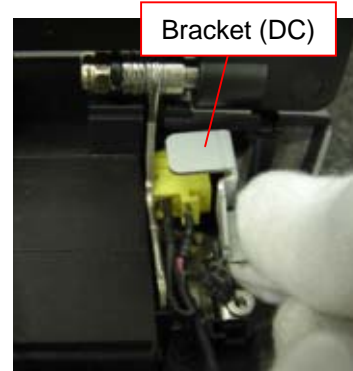
Bracket, DC Jack

1)



Remove the two screws.

2)

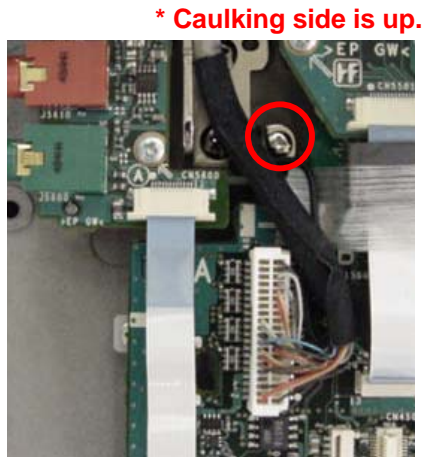
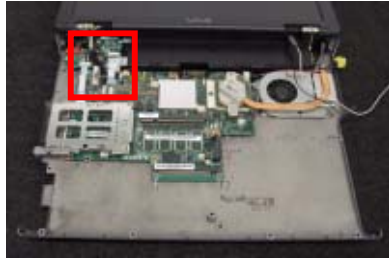


Remove the Bracket (one place), and then the DC Jack.

LCD Section

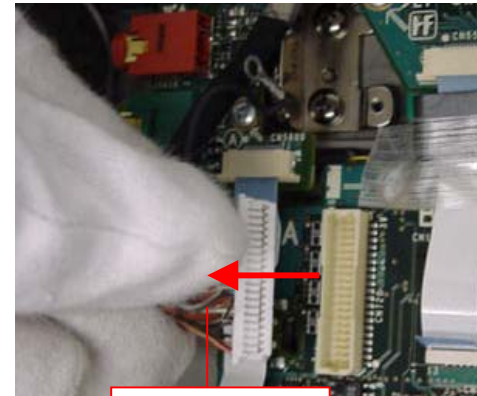
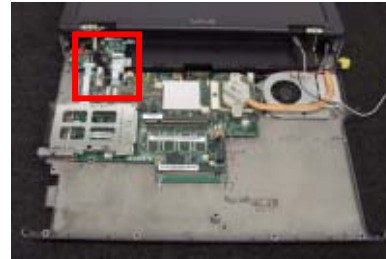
1)

Screw: B5



Remove the screw.

2)

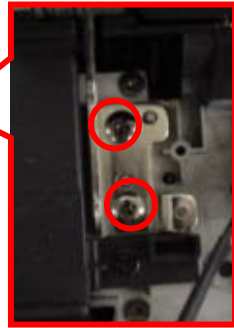
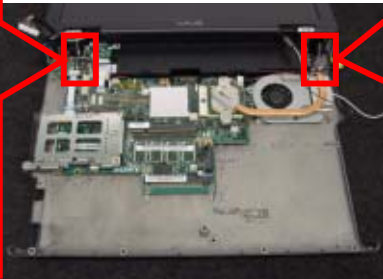
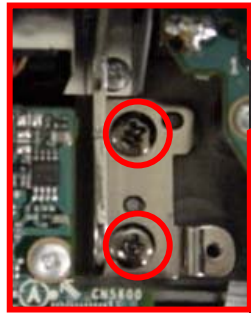


Harness (LCD)

Disconnect the Harness (LCD) directly above.

3)

Screw: B8



Remove the four screws.

4)

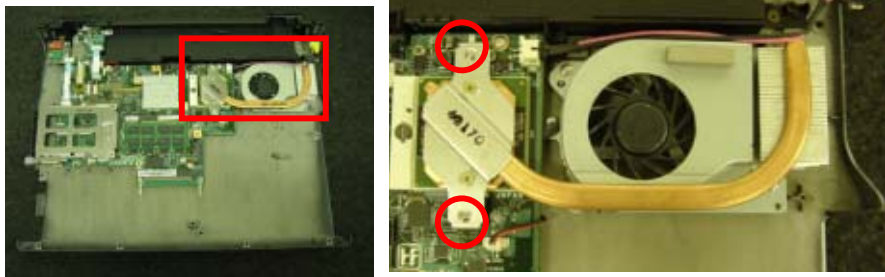


Remove the LCD Section.

Heatsink, Fan

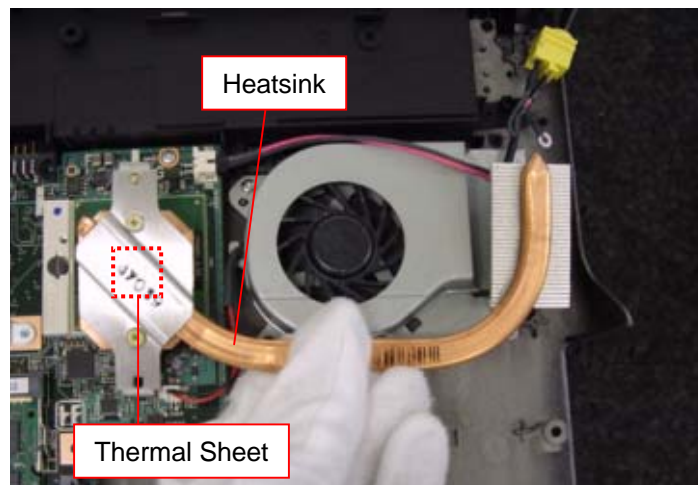
1)

Screw: B5



Remove the two screws.

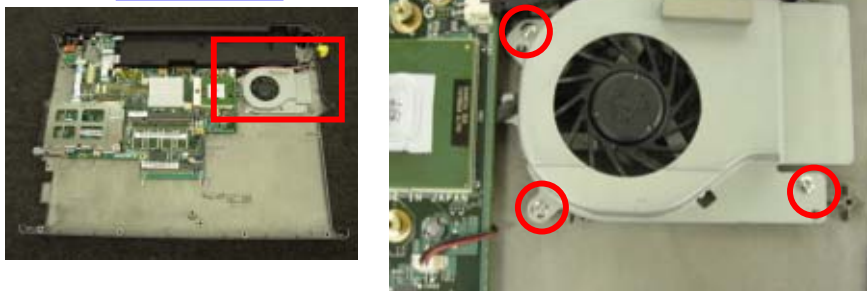
2)



Remove the Heatsink (one place).
 *The Thermal Sheet is attached on the backside.

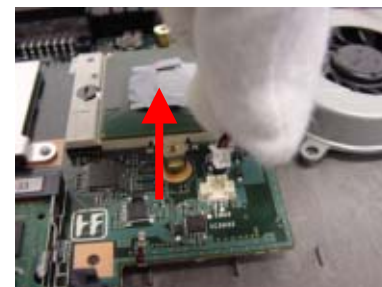
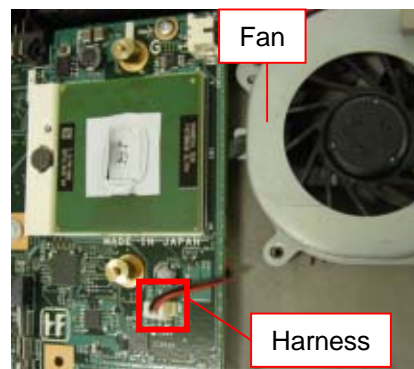
3)

Screw: B5



Remove the three screws.

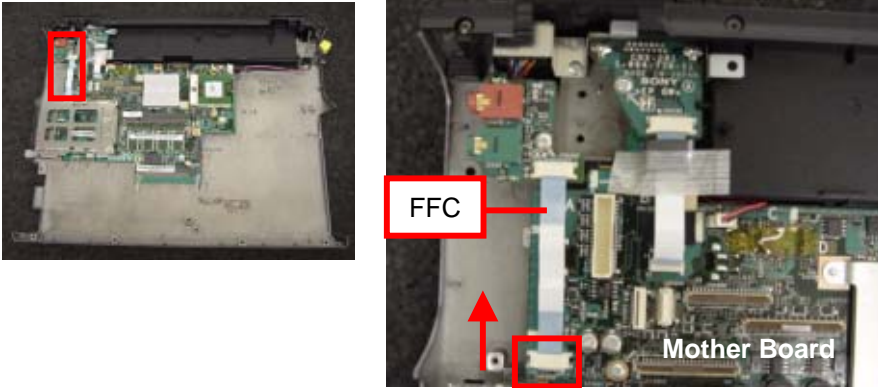
4)



Disconnect the Harness (one place), and then the Fan.

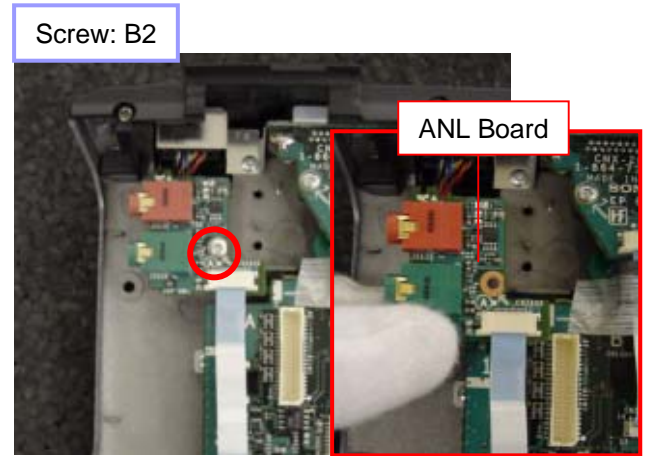
ANL-55 Board

1)



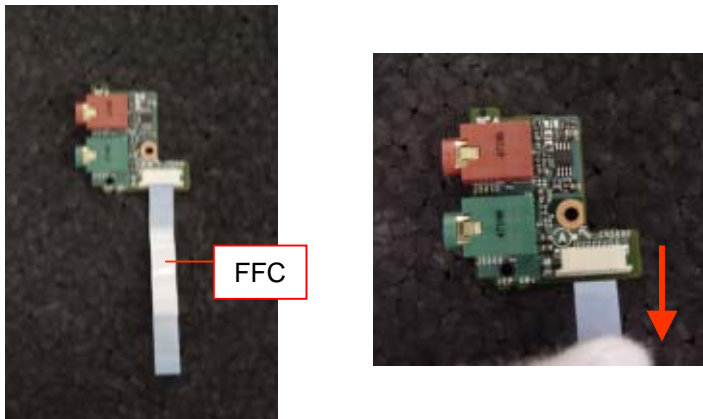
Pull out the FFC (one place) in the direction of the arrow.

2)



Remove the screw, and then the ANL Board.

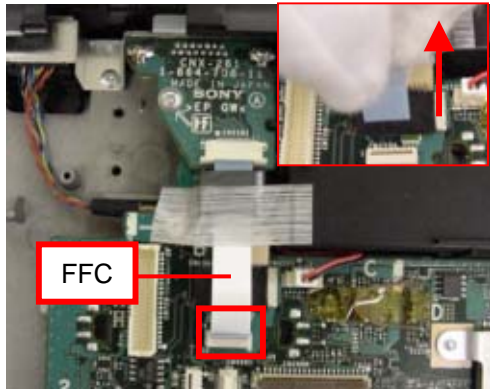
3)



Pull out the FFC (one location) in the direction of the arrow.

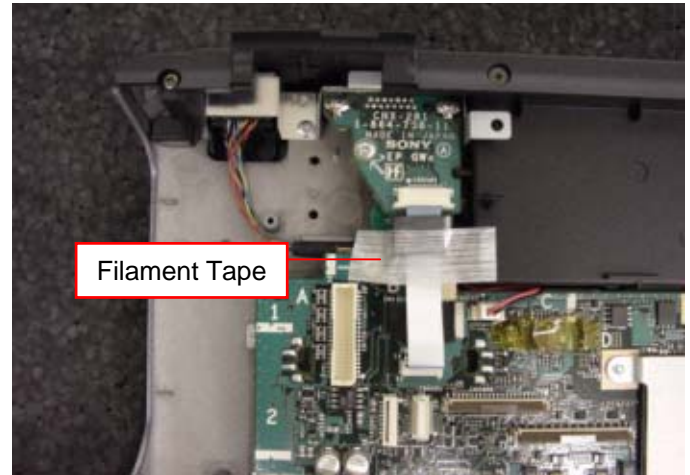
CNX-281 Board-1

1)



Pull out the FFC (one place).

2)

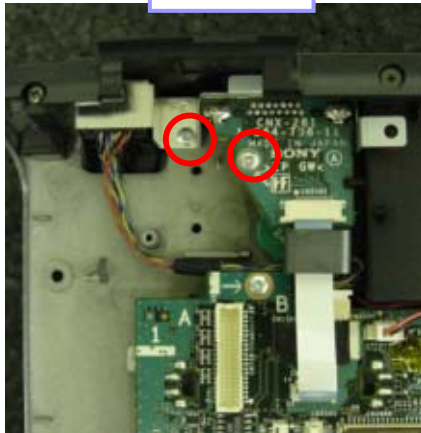


Peel off the Filament Tape (one place).

*Filament Tape: 12X30

3)

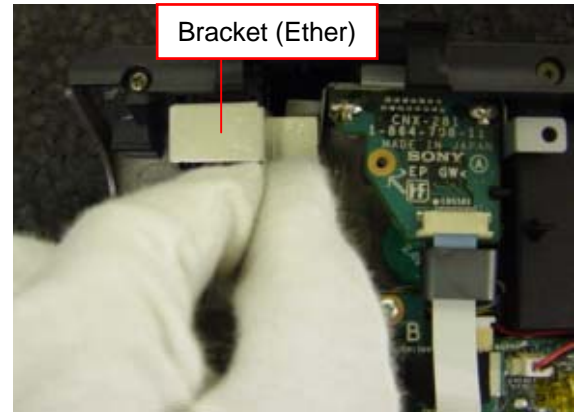
Screw: B2



Remove the two screws.

4)

Bracket (Ether)



Remove the Bracket (one place).

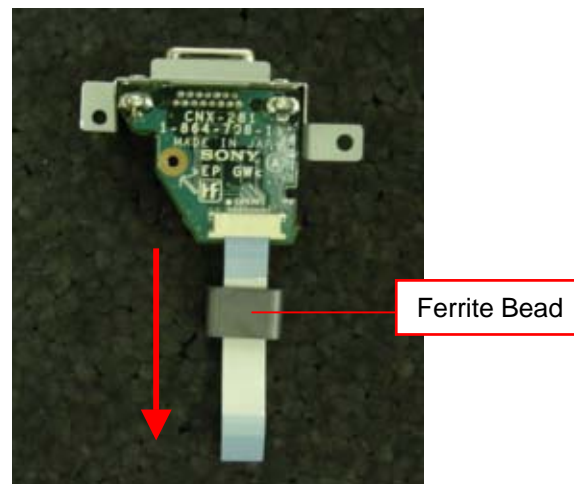
CNX-281 Board-2

5)



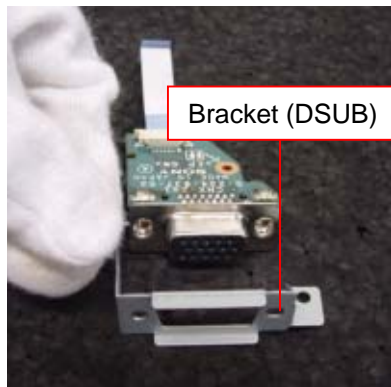
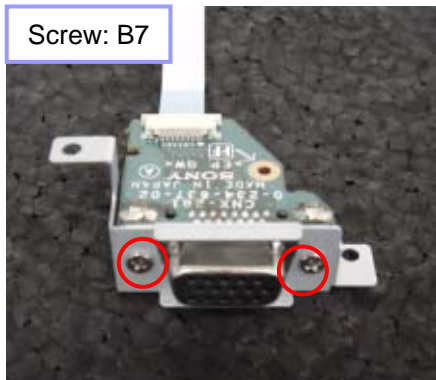
Remove the CNX Board (one place).

6)



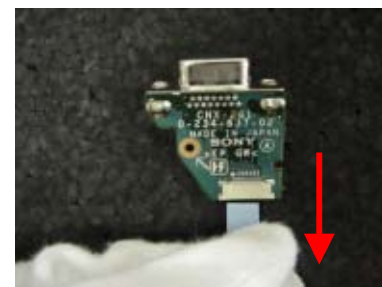
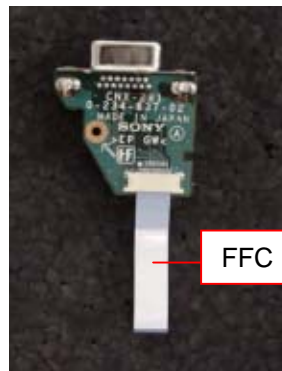
Remove the Ferrite Bead (one place).

7)



Remove the two screws, and then the Bracket.

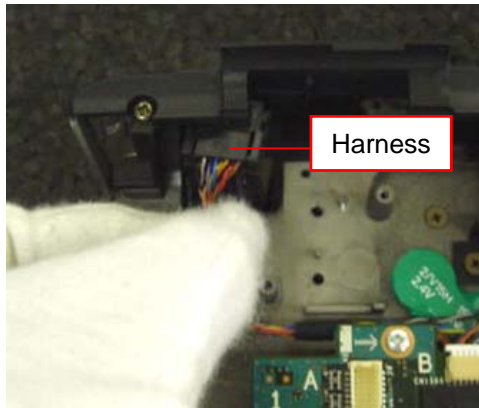
8)



Pull out the FFC (one place) in the direction of the arrow.

Mother Board

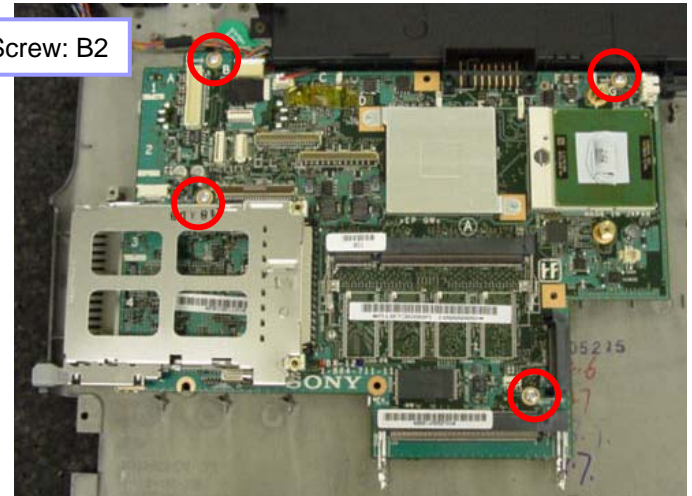
1)



Take out the connector portion of the Harness (one place).

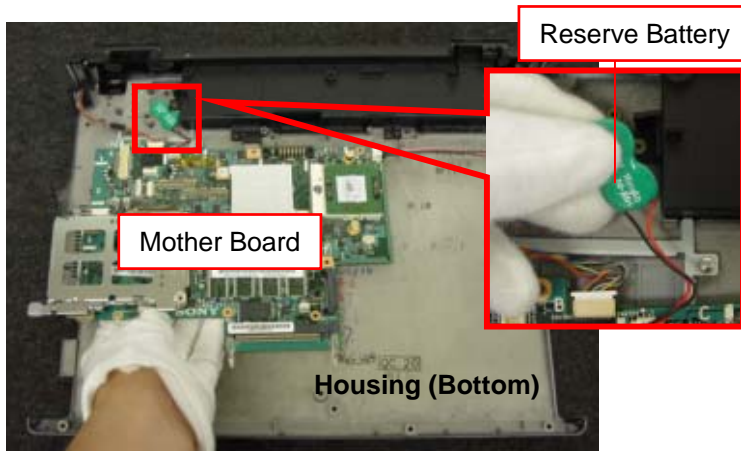
2)

Screw: B2



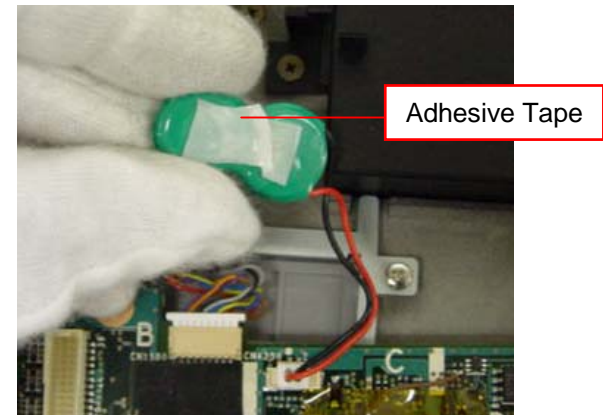
Remove the four screws.

3)



Peel off the Reserve Battery (one place) from the Housing (Bottom), and remove the Mother Board.

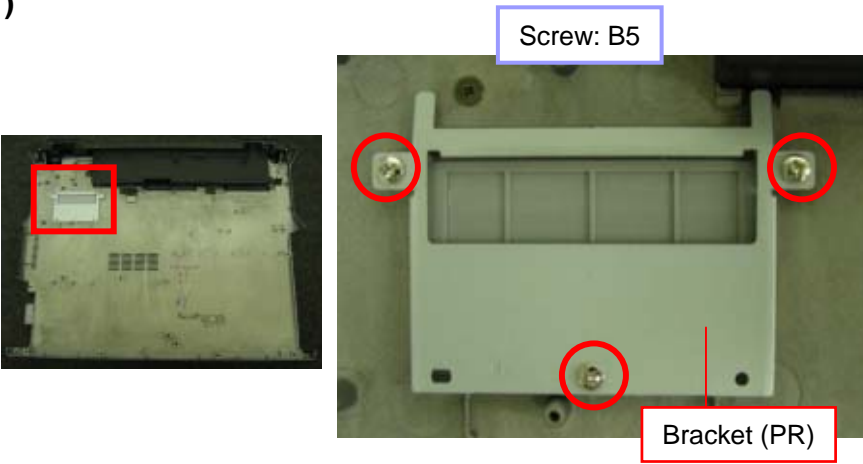
Remark



The adhesive tape is attached on the backside of the Reserve Battery.

Parts of the Housing (Bottom)-1

1)



Screw: B5

Bracket (PR)

Remove the three screws, and then the Bracket.

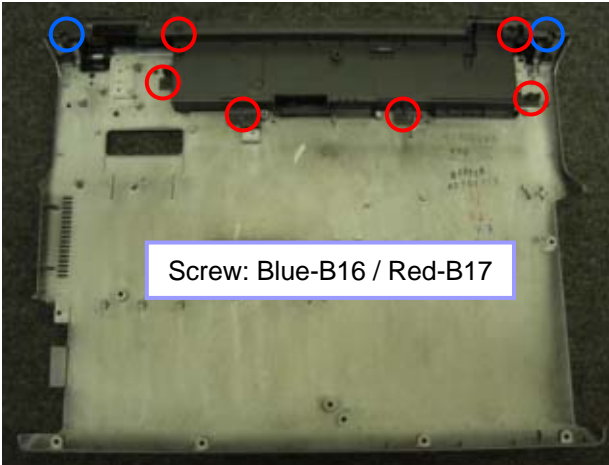
2)



Cover (PR)

Remove the Cover (one place).

3)



Screw: Blue-B16 / Red-B17

Remove the eight screws.

4)

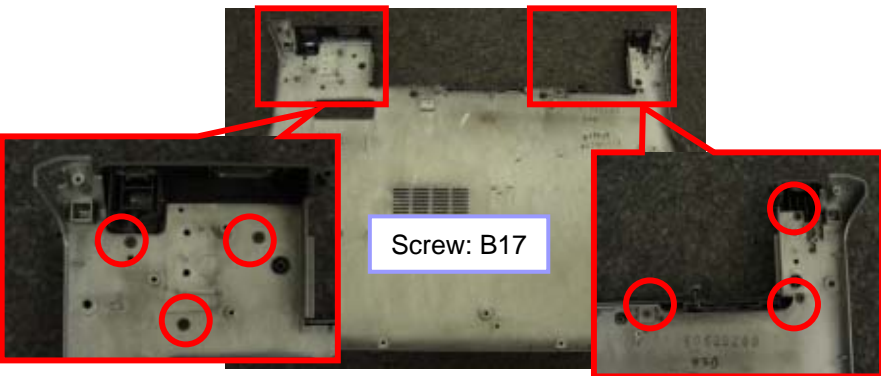


Display Base

Remove the Display Base.

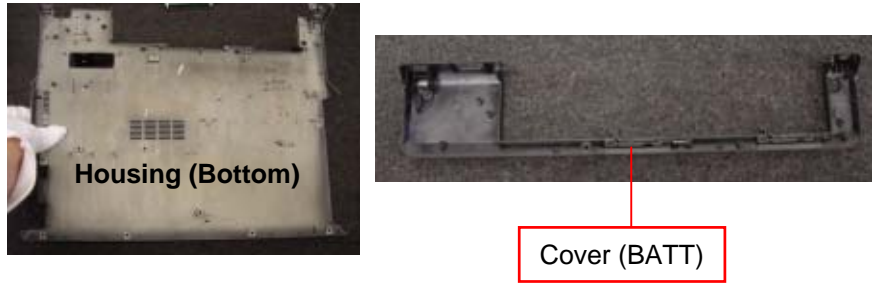
Parts of the Housing (Bottom)-2

5)



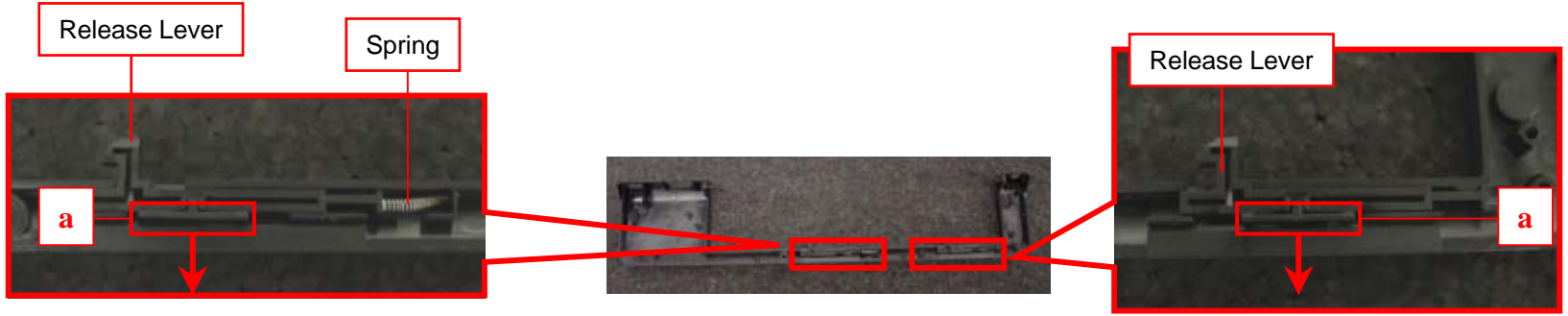
Remove the six screws.

6)



Lift up the Housing (Bottom), and remove the Cover from backside.

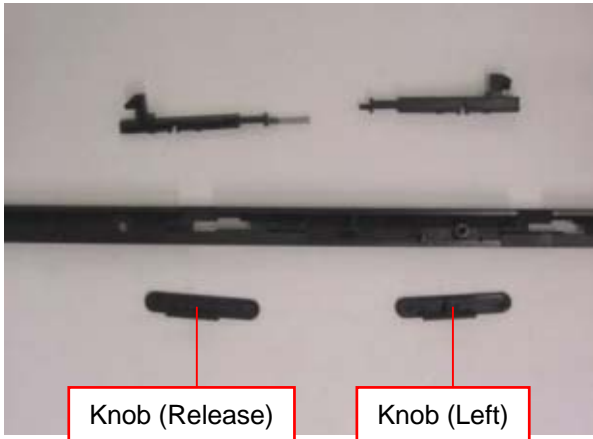
7)



While pushing the a-portion in the direction of the arrow, remove the Release Lever (two places) and Spring (one place).

Parts of the Housing (Bottom)-3

8)



Remove the Knob (two places).

Update History

[ADD]---Addition [DEL]---Deletion [CHG]---Change [COR]---Correction [MA]---Model Addition

Date		Contents	Version No.
-	-	-	-