

---

***Packard Bell***

***EasyNote XS Series***

***Disassembly Guide***



## ***Table of Contents***

Overview .....	3
Technician Notes.....	3
Disassembly Instructions.....	3
Reassembly Instructions .....	3
Required Tools .....	3
Battery .....	4
Keyboard .....	4
Hard Disk.....	5
Top Cover.....	7
Mainboard .....	10
Memory Modules.....	10
RTC Battery.....	11
Wireless LAN.....	12
Bluetooth .....	13
LCD Assembly.....	13
Webcam .....	14
LCD Panel .....	15
Reassembly Notes .....	18
Notice .....	18

## Overview

This document contains step-by-step disassembly instructions for the EasyNote XS series. The instructions are illustrated where necessary with images of the part of the device that is being removed or disassembled.

Packard Bell reserves the right to make changes to the EasyNote XS series without notice.

## Technician Notes

Only technicians authorized by Packard Bell B.V. should attempt to repair this equipment. All troubleshooting and repair procedures are detailed to allow only subassembly/module level repair. Because of the complexity of the individual boards and subassemblies, no one should attempt to make repairs at the component level or to make modifications to any printed wiring board. Improper repairs can create a safety hazard. Any indication of component replacement or printed wiring board modifications may void any warranty or exchange allowances.

## Disassembly Instructions

When disassembling the unit, follow these general rules:

- n Turn off the power and disconnect all cables.
- n Label all removed connectors. Note where the connector goes and in what position it was installed.
- n Do not disassemble the unit into parts that are smaller than those specified in the instructions.

## Reassembly Instructions

Reassembly is the reverse of the disassembly process. Use care to ensure that all cables and screws are returned to their proper positions. Check that no tools or any loose parts have been left inside the product. Check that everything is properly installed and tightened.

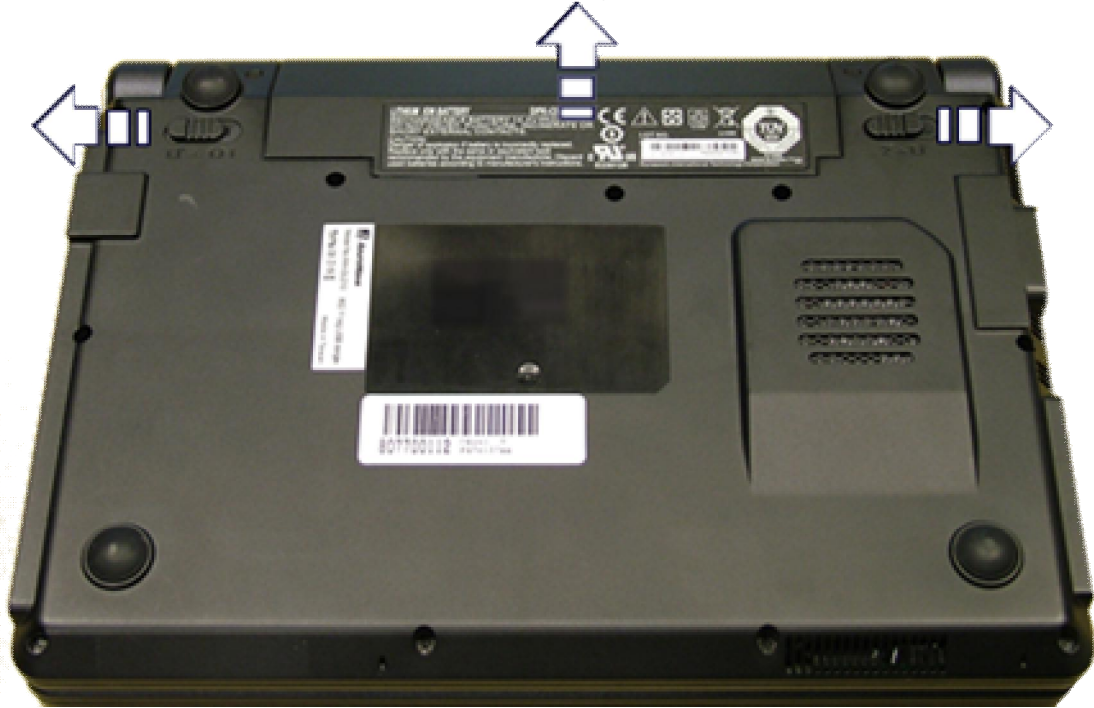
## Required Tools

All disassembly procedures can be performed using the following tools:

- n Phillips (#1 bit) screwdriver
- n Hex bolt (5 bit) screwdriver
- n Small flat blade screwdriver

## Battery

1. Push aside the 2 latches securing the battery.



**Fig. 1** Removing the battery.

2. Pull out the battery

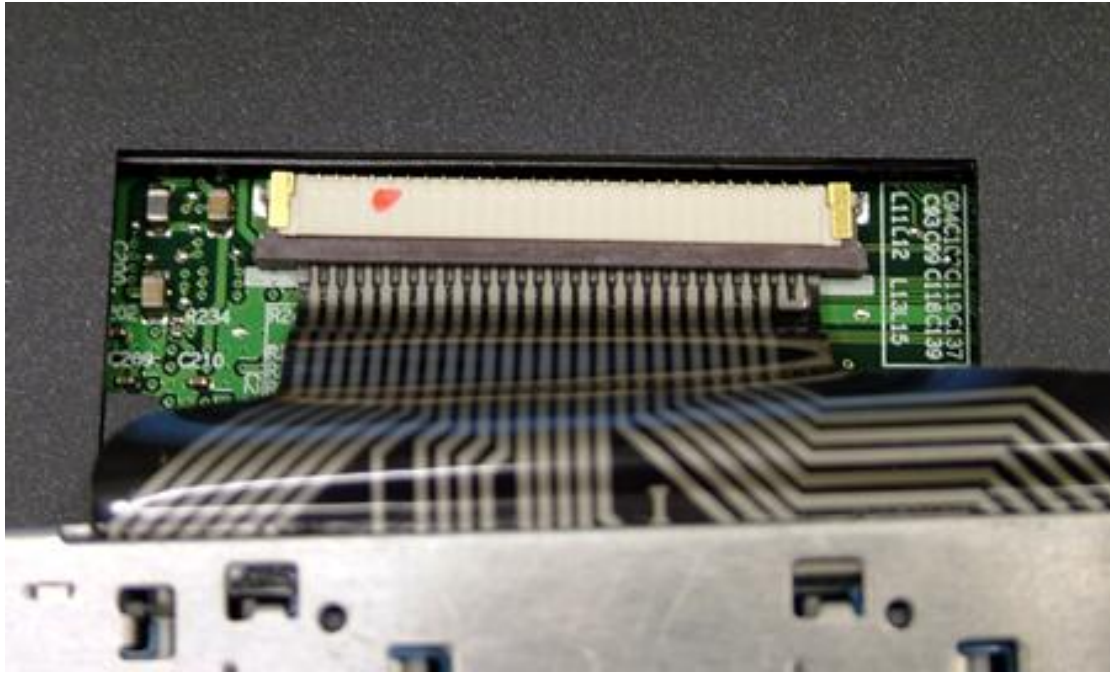
## Keyboard

1. Remove the battery as described above.
2. Push back the 3 clips that secure the keyboard backwards with a flathead screwdriver.



**Fig. 2** The keyboard clips.

3. Lift up the keyboard.
4. Disconnect the flatcable by carefully pushing the brown clamp downwards.



**Fig. 3** *The keyboard flatcable.*

5. Lift out the keyboard.

## Hard Disk

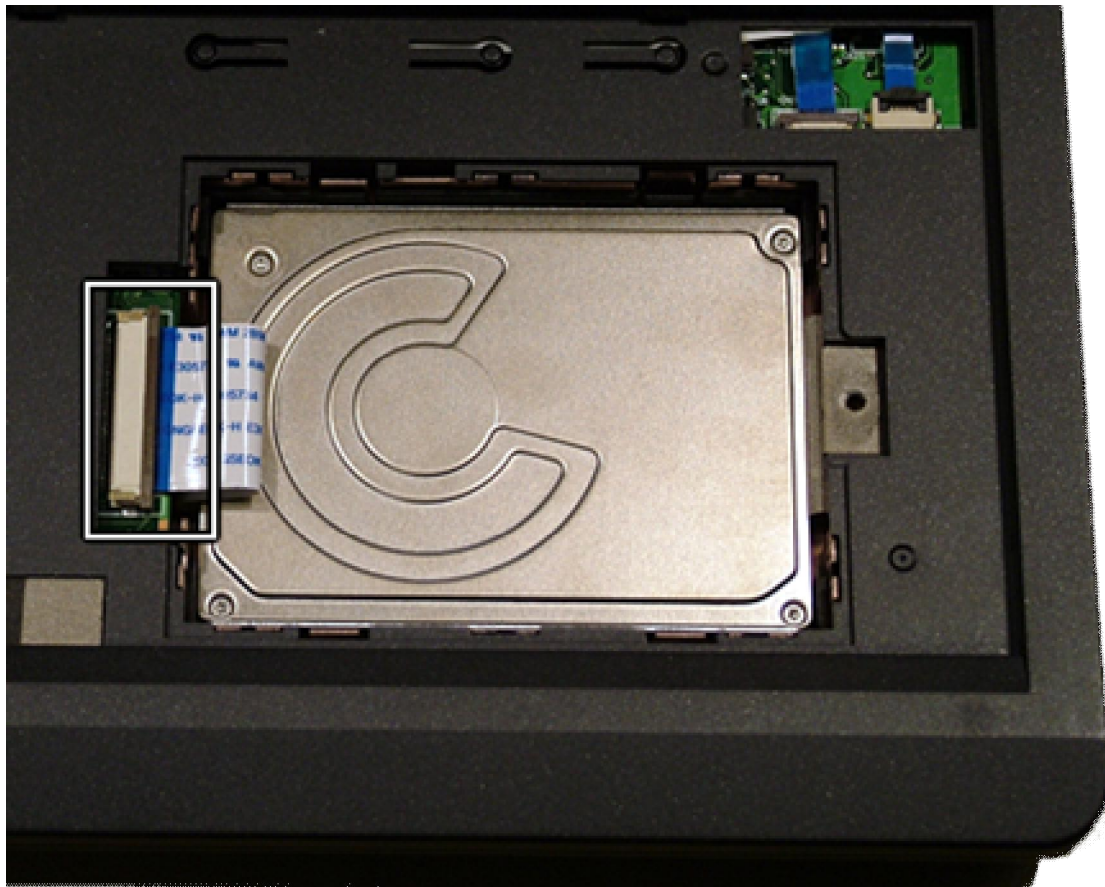
1. Remove the battery and keyboard as described above.
2. Remove the screw securing the hard disk cover.



**Fig. 4** *The HDD cover.*

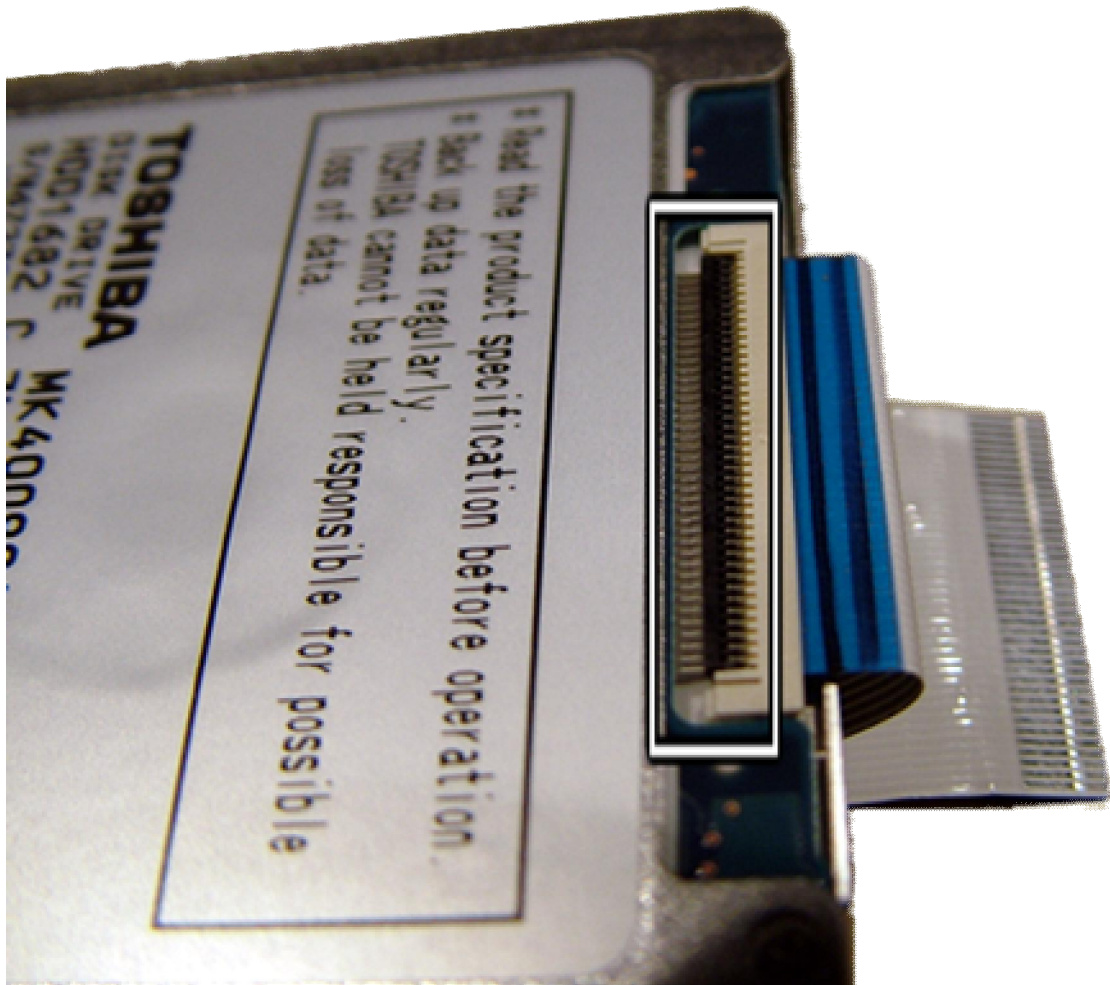


3. Remove the HDD cover.
4. Very gently lift the black clip that secures the HDD flat cable.
5. Push the brown clip sideways to release the flat cable and disconnect it from the mainboard.



**Fig. 5** *The HDD flat cable.*

6. Lift out the hard disk drive.

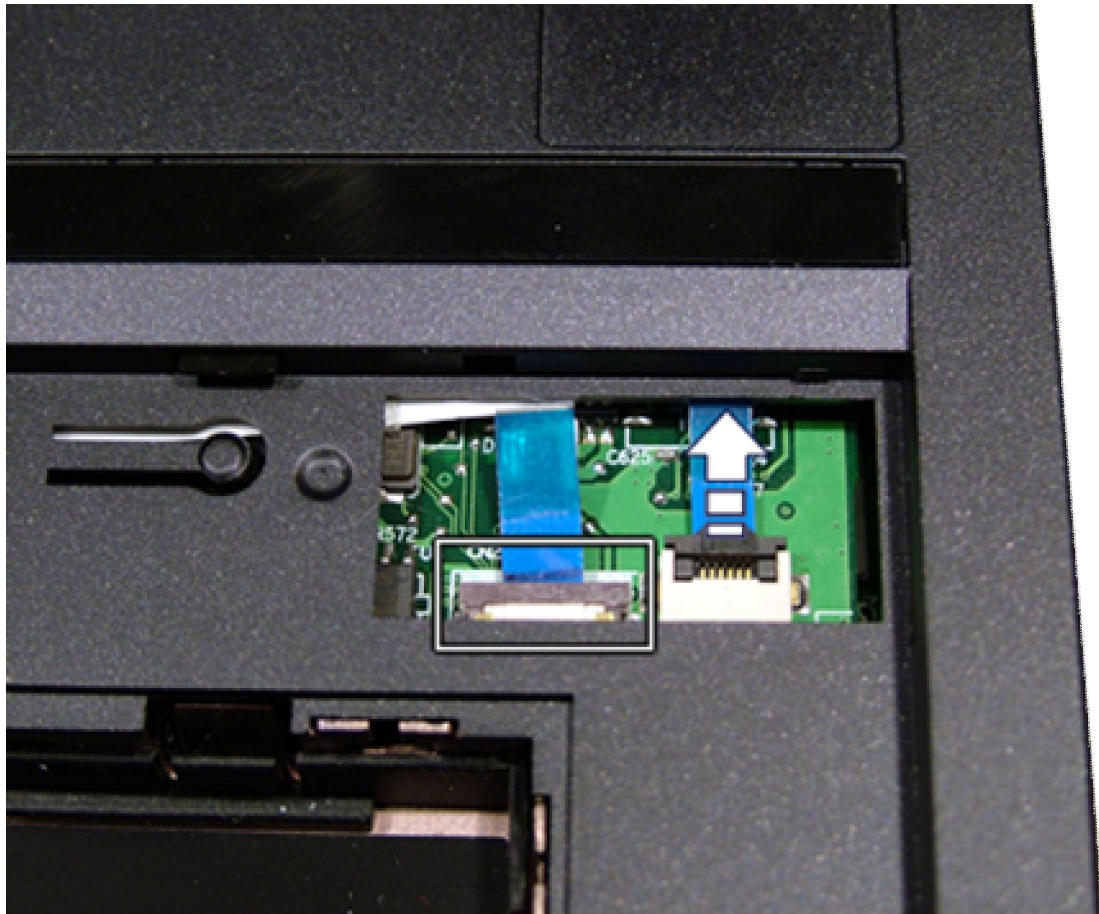


**Fig. 6** Close up of the HDD flat cable.

6. Pull the right hard disk to the right and lift it out.
7. Pull out the flat cable.

## Top Cover

1. Remove the battery, hard disk and keyboard as described above.
2. Disconnect the two flat cables of the touchpad. Push the brown connector upwards. The black connector can be lifted and folded outwards.



**Fig. 7** *The touchpad flat cables.*

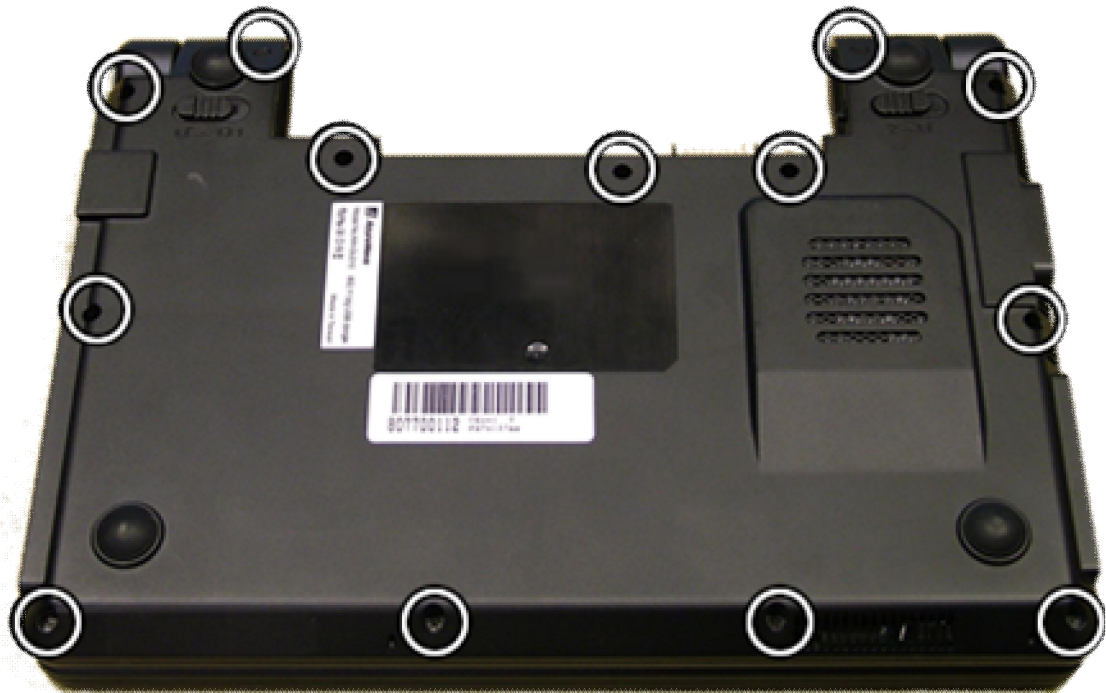
3. Remove the 2 rubber stoppers on the bottom side near the LCD hinges.



**Fig. 8** *The rubber stoppers for the LCD hinge screws.*

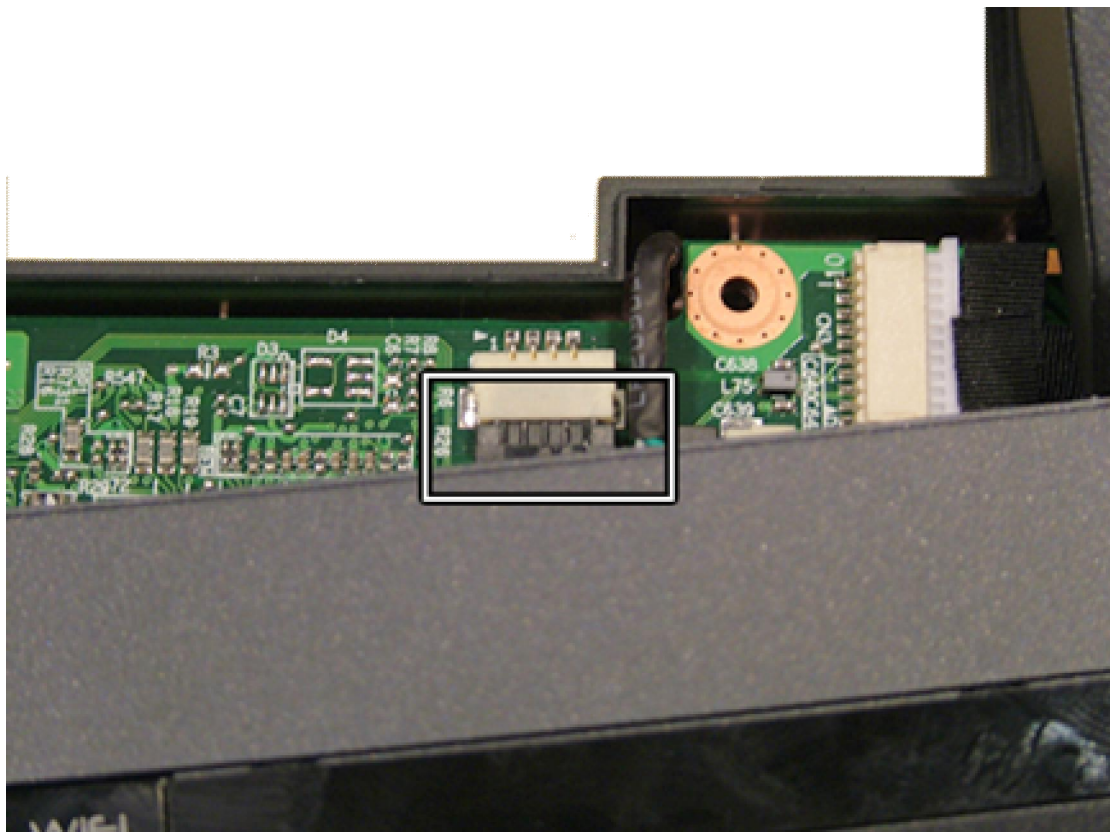


4. Remove the 13 screws from the bottom base.



**Fig. 9** *The bottom of the notebook.*

5. Lift the top cover a bit towards the front to get access to the speaker connector. Disconnect the cable.

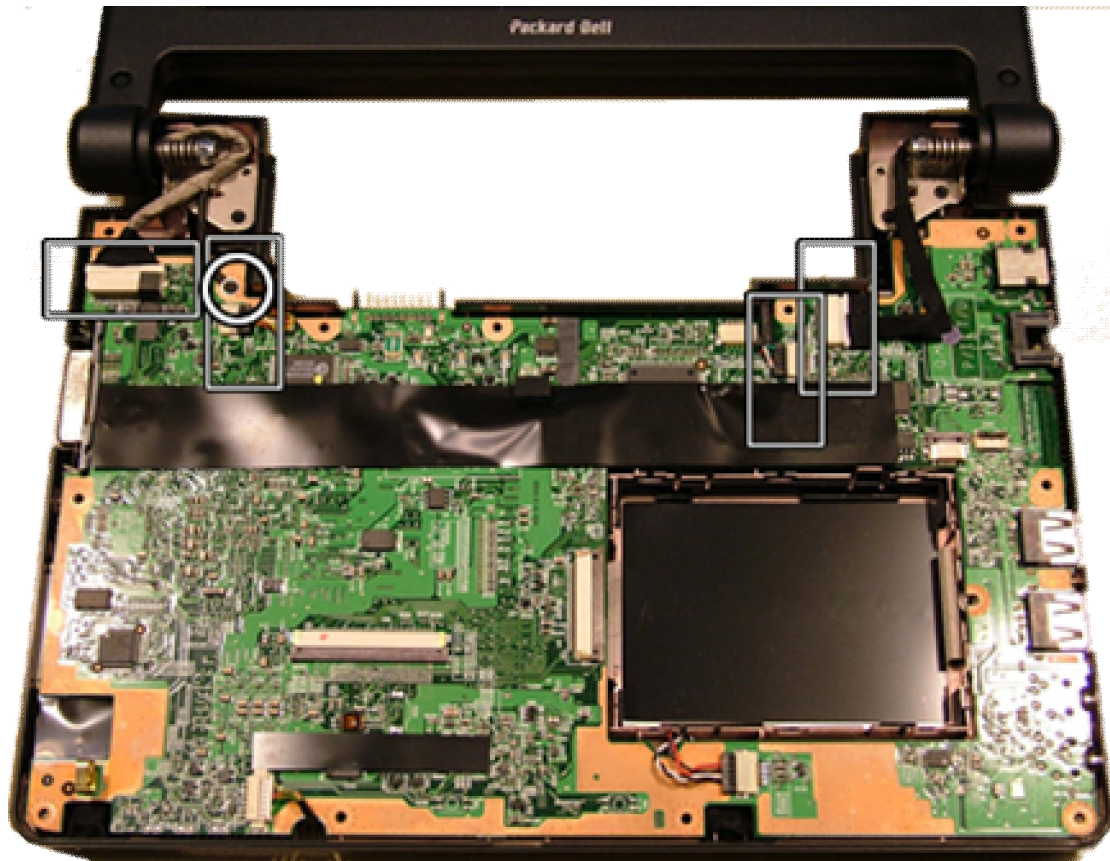


**Fig. 10** *The speaker cable.*

6. Now you can take away the top cover.

## Mainboard

1. Remove the battery, keyboard, hard drive and top cover as described above.
2. Disconnect all cables from the mainboard.



**Fig. 11** *The mainboard assembly.*

3. Lift out the mainboard.

---

**Note:** The CPU is soldered on the mainboard and does not require further disassembly.

---

## Memory Modules

1. Remove the mainboard as described above.
2. Remove the memory module from the backside of the mainboard. To do so, push the clips aside and lift out the module.



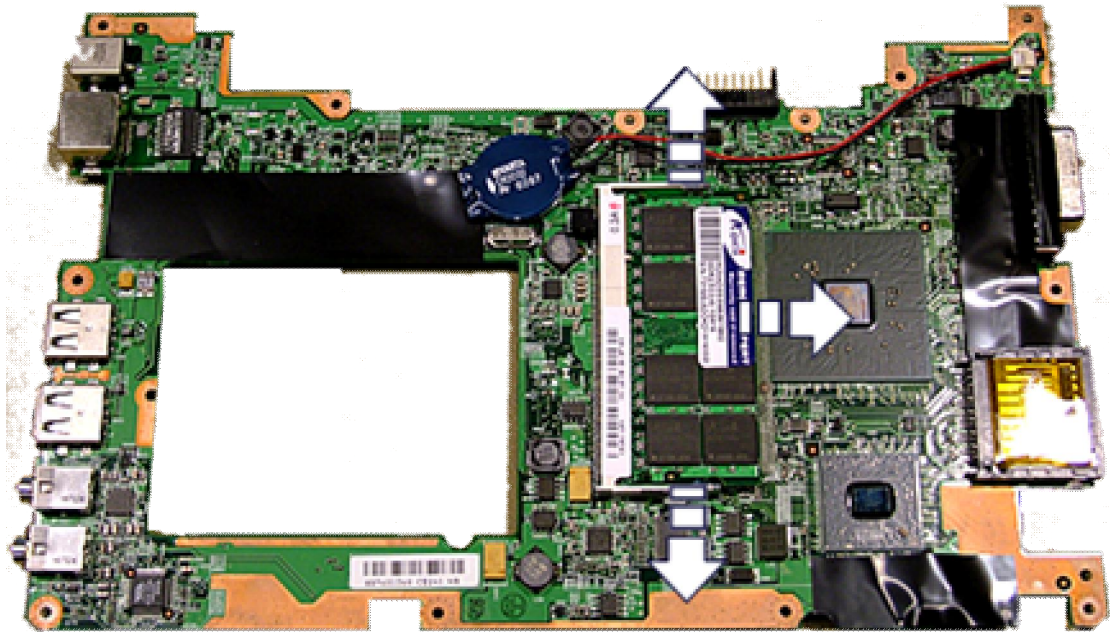


Fig. 12 The memory modules.

## RTC Battery

1. Remove the mainboard as described above.
2. Disconnect the RTC battery and remove it from the mainboard. Note that the battery is lightly glued in its place.



Fig. 13 The RTC battery.

## CPU Cooler

1. Remove the mainboard as described above.
2. On the bottom cover, remove the 4 screws of the CPU cooler.

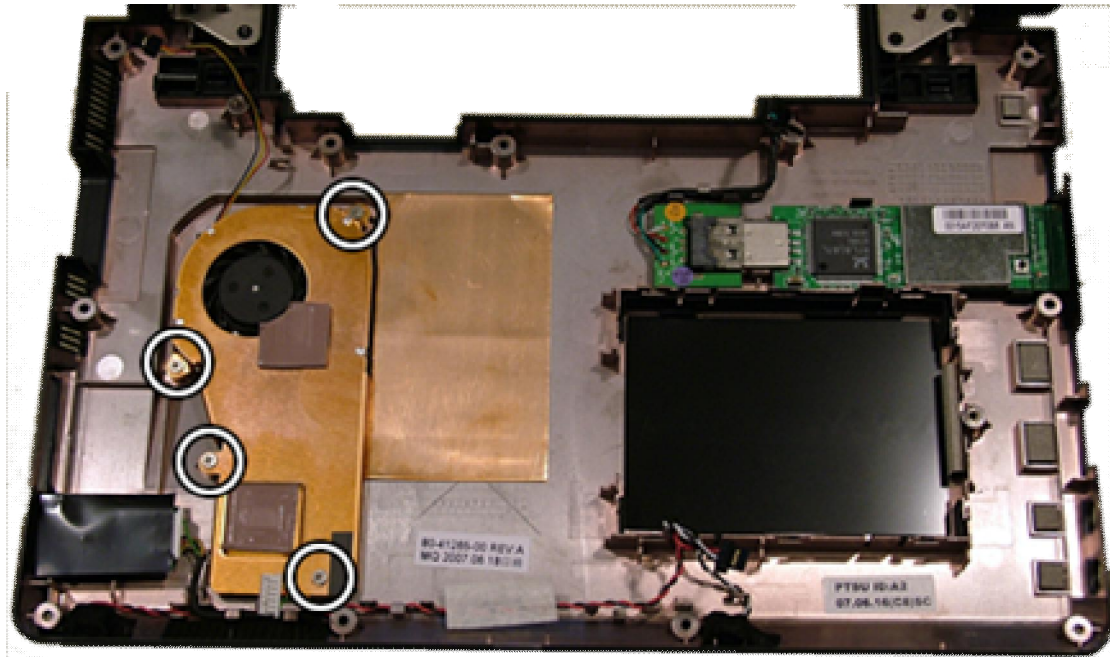


Fig. 14 The CPU cooler.

## Wireless LAN

1. Remove the mainboard as described above.
2. The Wireless LAN card is clicked in its place. Gently push one clip aside to release the card.

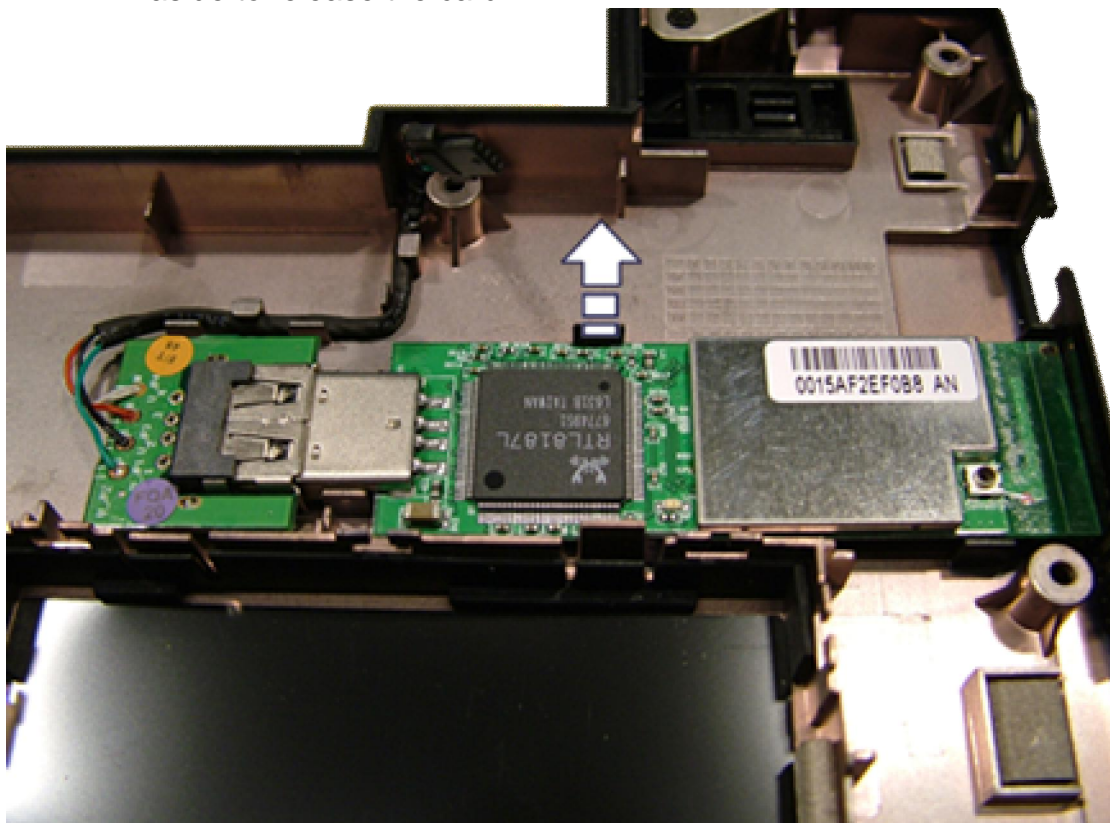


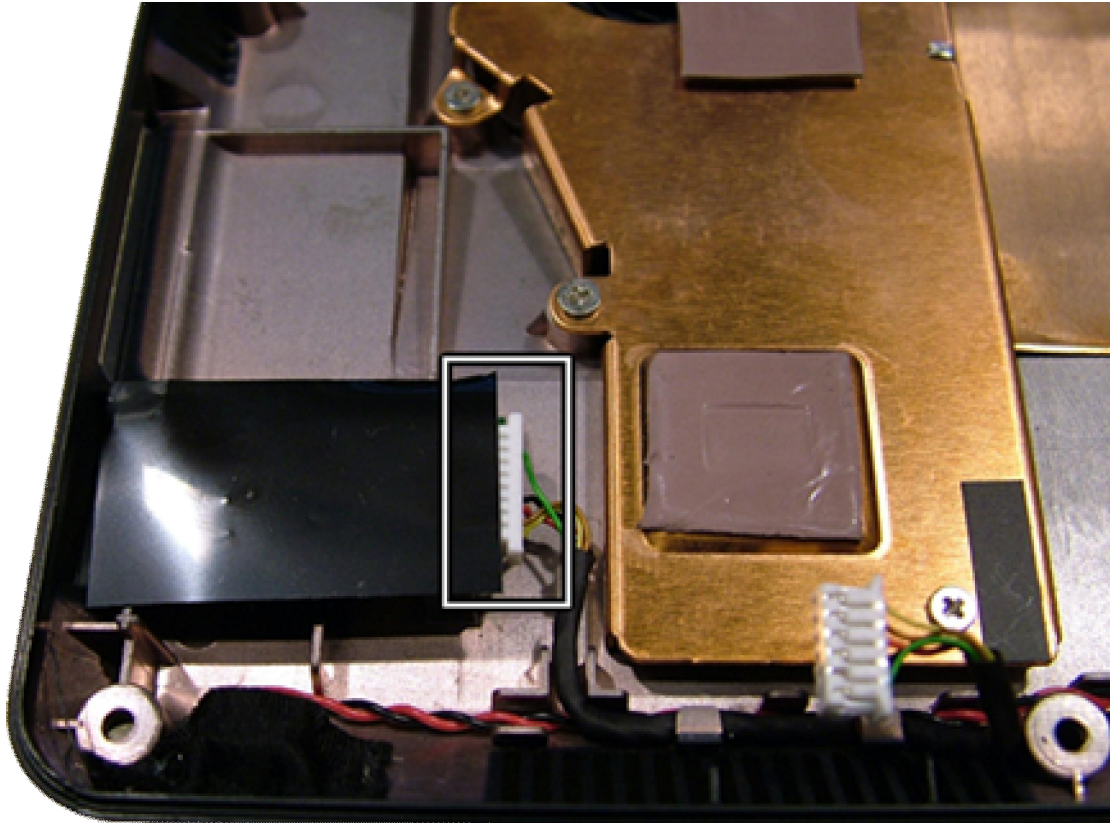
Fig. 15 The WLAN card.



3. Unplug the card from the USB board.

## Bluetooth

1. Remove the mainboard as described above.
2. Disconnect the cable from the Bluetooth module.

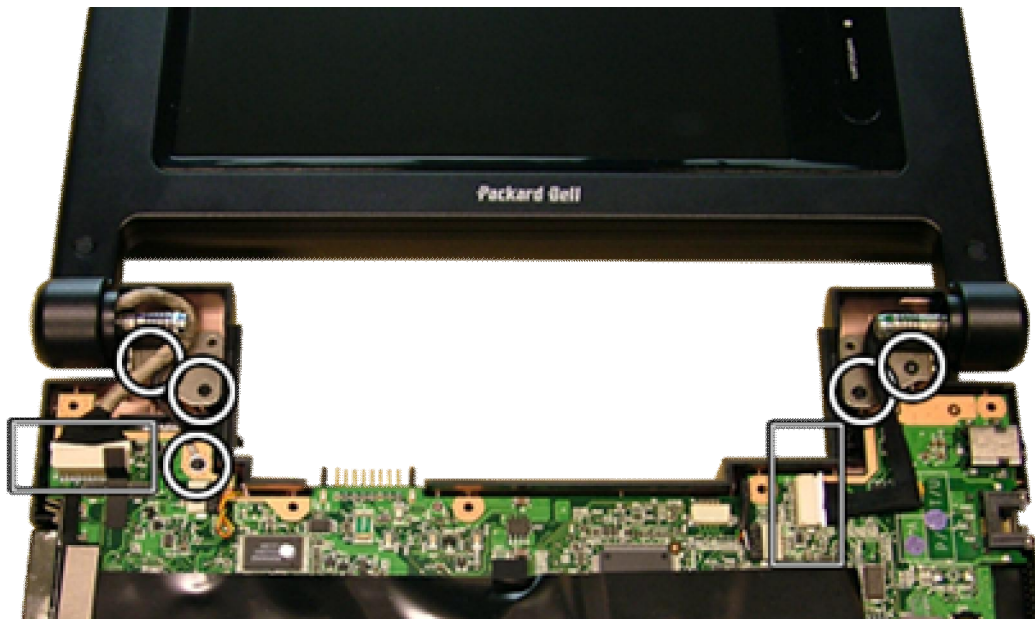


**Fig. 16** *The Bluetooth module.*

3. The Bluetooth module is clicked in its place. Lift the protective foil and very gently push one clip aside to release the card module.

## LCD Assembly

1. Remove the top cover as described above.
2. Disconnect the webcam and LCD cable from the mainboard.
3. Remove the screw of the grounding cable.
4. Remove the 4 hinge screws.



**Fig. 17** *The hinge screws, web cam and LCD cable.*

5. The LCD panel can now be lifted out.

## Webcam

1. Remove the LCD assembly as described above.
2. Remove the 4 rubber stoppers and the screws underneath them.



**Fig. 18** *The top cover stoppers and screws.*

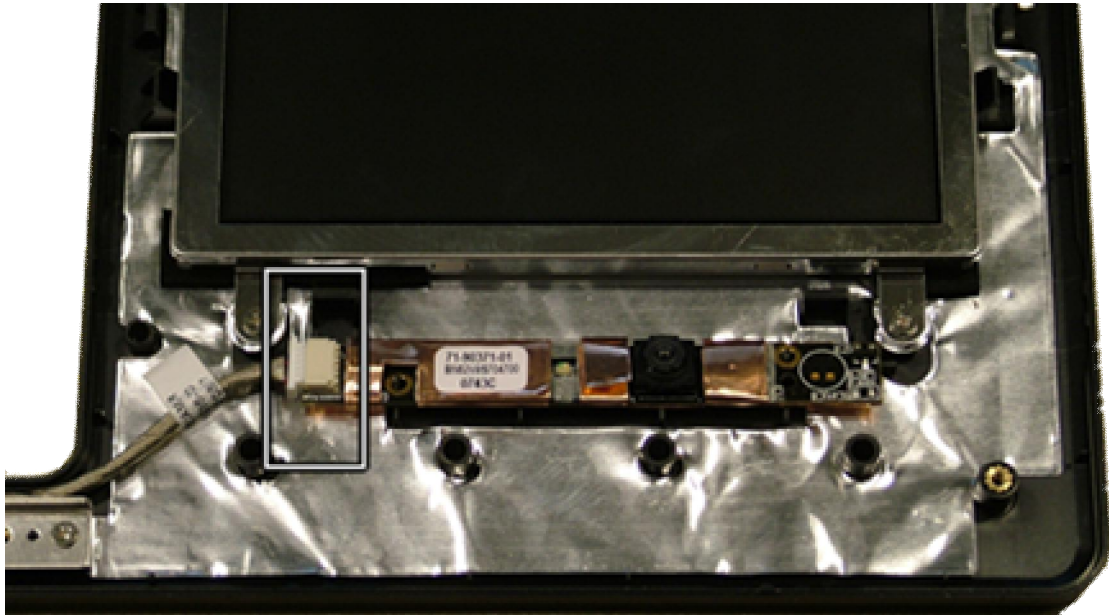
3. Remove the LCD bezel, which is clicked in its place. The bottom side is easiest to pry loose, so start there.

---

**Note:** Mind the silver hinge covers, they may come loose when removing the front cover.

---

4. Disconnect the webcam cable.



**Fig. 19** *The webcam cable.*

5. Remove the webcam.

## LCD Panel

1. Remove the LCD assembly as described above.
2. Remove the 4 rubber stoppers and the screws underneath them (see Fig 18.)
3. Remove the LCD bezel, which is clicked in its place. The bottom side is easiest to pry loose, so start there.

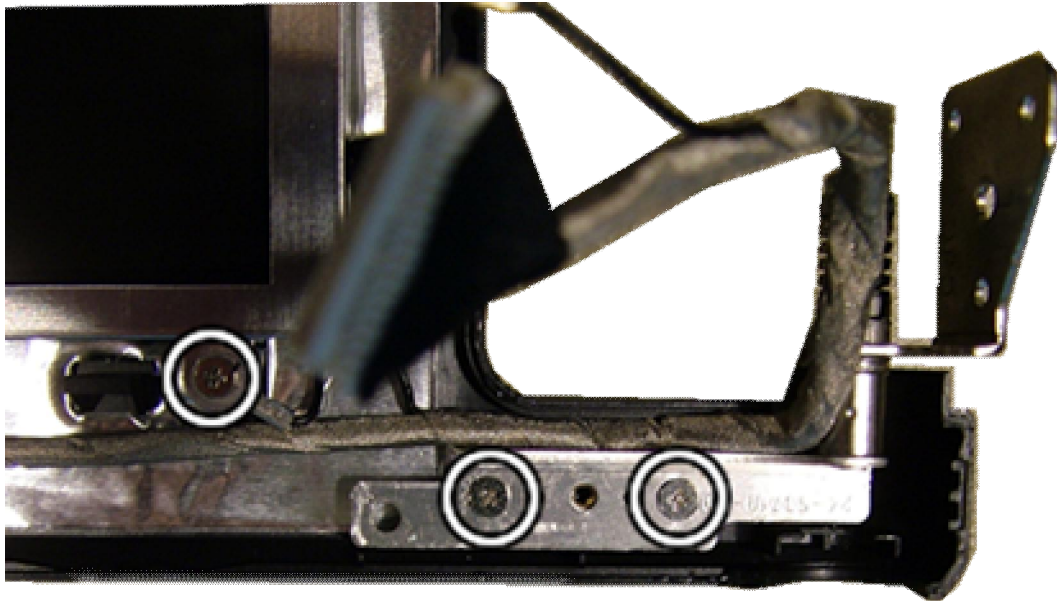
---

**Note:** Mind the silver hinge covers, they may come loose when removing the front cover.

---

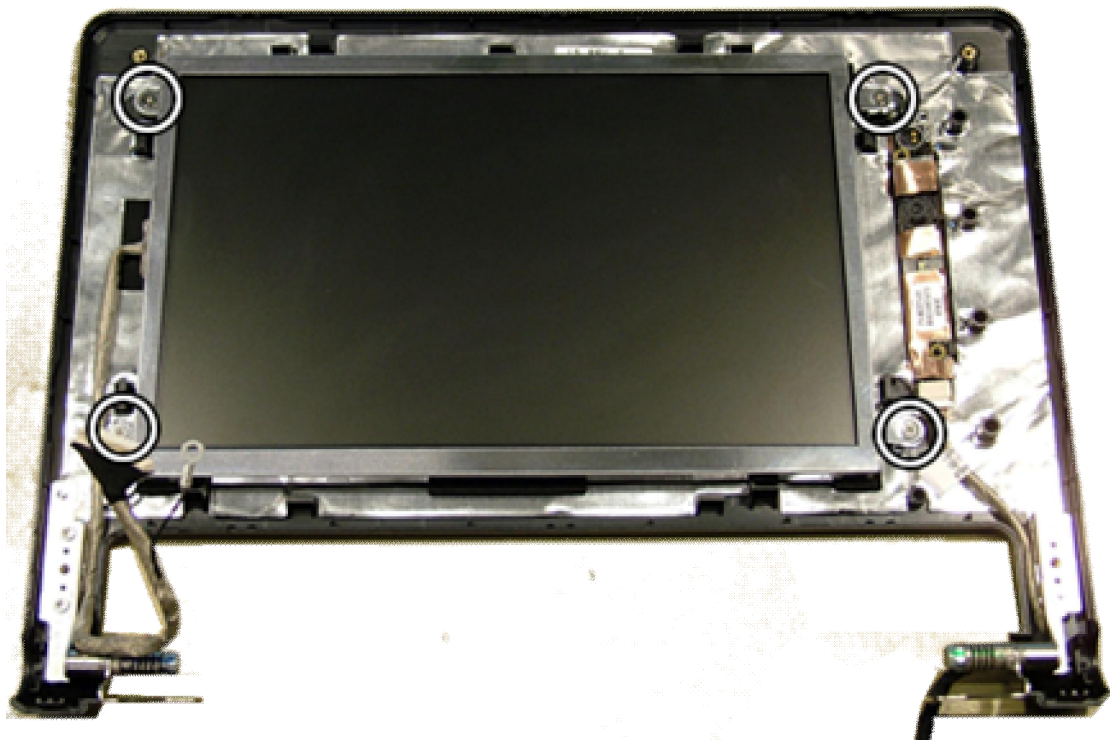
4. Remove the left hinge to release the LCD cable.





**Fig. 20** *The hinge screws.*

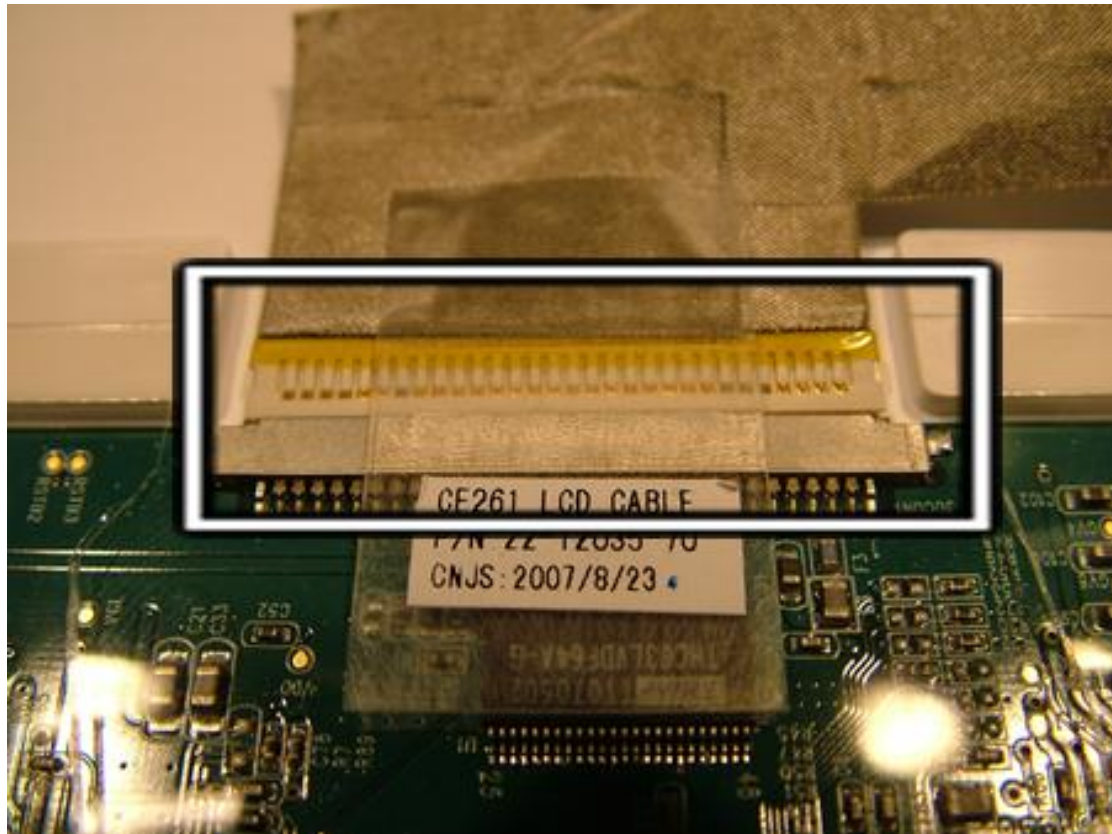
5. Remove the 4 screws holding the LCD panel.



**Fig. 21** *The LCD panel screws.*

6. Lift out the LCD panel.
7. Disconnect the LCD cable from the rear of the panel. Make sure to first remove the tape.





**Fig. 22** *The LCD cable connector.*

## Reassembly Notes

When reassembling the device, please take notice of the order in which the parts can be put back and reattached.

## Notice

The information in this guide is subject to change without notice.

This guide contains information protected by copyright. No part of this guide may be photocopied or reproduced in any form or by any means without prior written consent from Packard Bell B.V.

PACKARD BELL B.V. SHALL NOT BE LIABLE FOR TECHNICAL OR EDITORIAL ERRORS OR OMISSIONS CONTAINED HEREIN; NOR FOR INCIDENTAL OR CONSEQUENTIAL DAMAGES RESULTING FROM THE FURNISHING, PERFORMANCE, OR USE OF THIS MATERIAL.

Copyright © 2007 Packard Bell B.V. All rights reserved.

First Edition: November 2007  
Version: 1.0

Packard Bell B.V.