

## Chapter

## 2

## Disassembly Procedure

*Please follow the information provided in this section to perform the complete disassembly procedure of the notebook. Be sure to use proper tools described before.*

**A**SUS G1S Series Notebook consists of various modules. This chapter describes the procedures for the complete notebook disassembly. In addition, in between procedures, the detailed disassembly procedure of individual modules will be provided for your service needs.

The disassembly procedure consists of the following steps:

- Battery Module
- CPU Module
- Memory Module
- HDD Module
- Optical Drive Module
- Keyboard Module
- Top Case Module
- LCD Module
- Motherboard Module
- WLAN Module

---

BATTERY

---

## Battery Module

*The illustration below shows how to remove the battery module.*

Remove battery module

1. Slide the battery latch 1 to open battery lock
2. Slide the battery latch 2 and pull the whole battery away from the system.




---

CPU MODULE  
REMOVAL

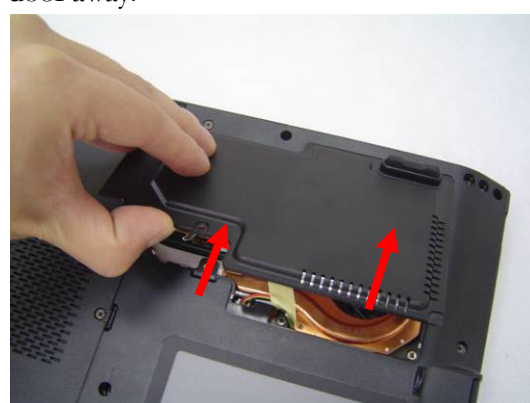
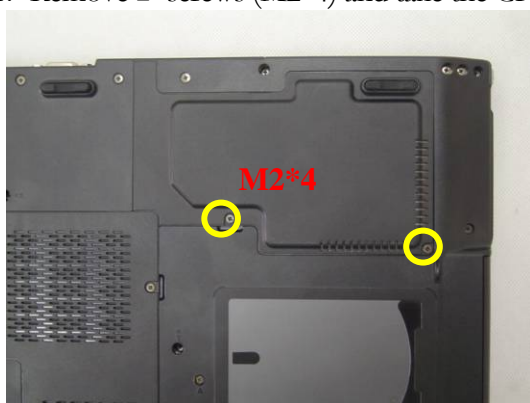
---

## CPU Module

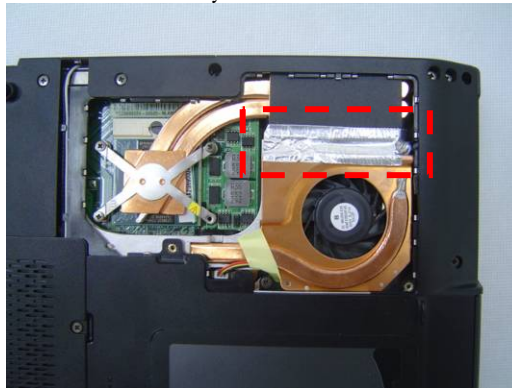
*The illustrations below show how to remove the CPU module from the notebook.*

Replacement CPU

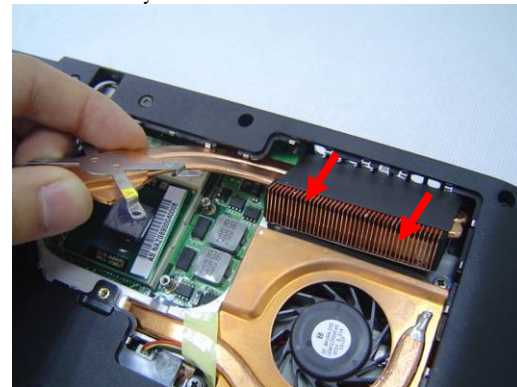
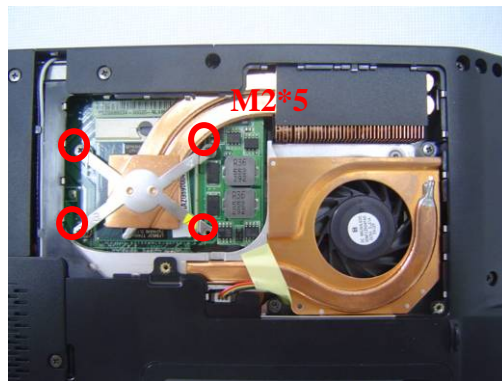
1. Remove 2 screws (M2\*4) and take the CPU door away.



2. Remove the Mylar.



3. Remove 4 screws (M2\*5) aside the CPU. And take away the heat sink..



4. Turn the non-removable screw here 180 degrees counter-clockwise to loosen the CPU.



- Squeeze the vacuum handling pump and use it to lift the CPU away.



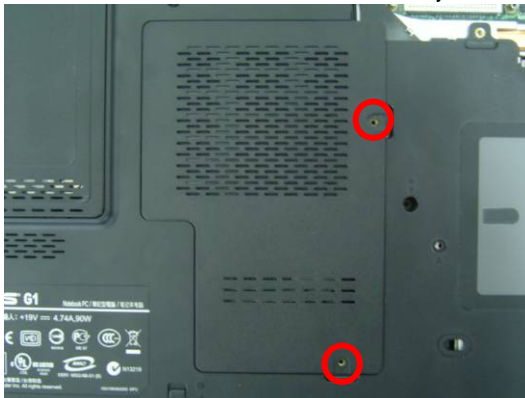
## MEMORY MODULE

### Memory Module

The illustration shows how to remove the memory module from the notebook.

#### Removing Memory module

- Remove 2 screws on the memory cover and then remove the cover.



- Unlock two latches to pop up the memory at 45 angles then pull out the memory at that angle.





---

WLAN  
MODULE

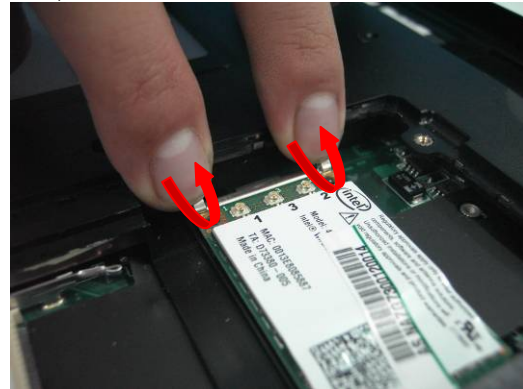
---

## WLAN Module

*The illustrations below show how to remove the WLAN module from the notebook.*

### Remove WLAN module

1. Disconnect 3 antenna cables, remove 1 piece of tape and remove the antennas out of cable guide; then unlock two latch and take WLAN out of system;



HDD  
MODULE

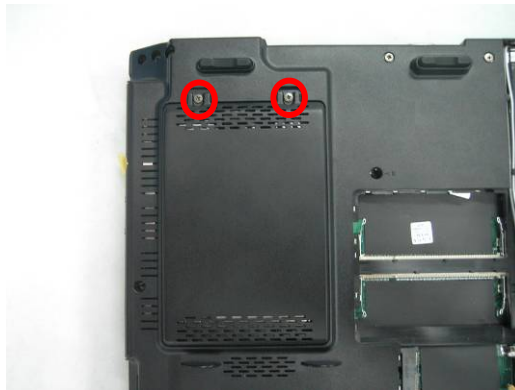
HDD  
MODULE  
REMOVAL

## HDD Module

The illustrations below show how to remove the HDD module from the notebook.

### Removing HDD Module

1. Remove 2 screws (M2\*5) here, open HDD door by the tweezers and then take away the HDD door.



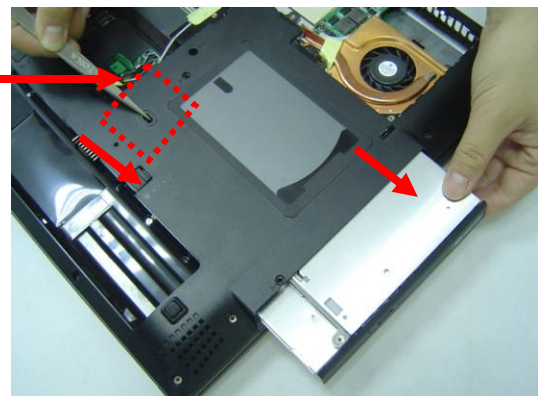
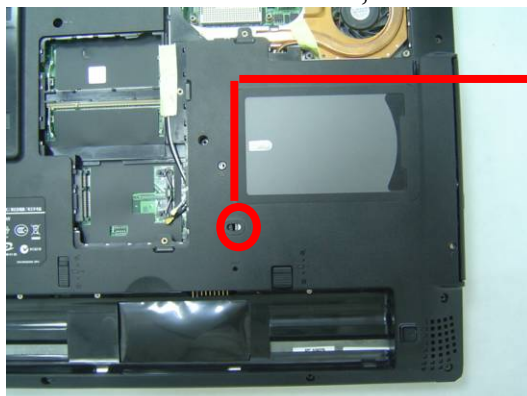
2. Remove the sponge and pull the hard disk module toward the direction of the arrow and lift it up and take it out.



OPTICAL  
DRIVE  
REMOVAL

## Optical Drive Module

1. Unlock and hold the latch, and remove the ODD module.



---

KEYBOARD

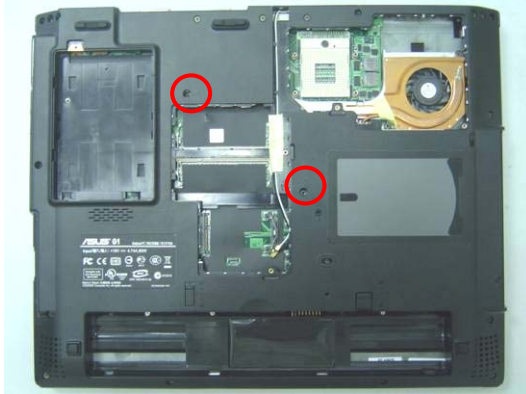
---

## Keyboard Module

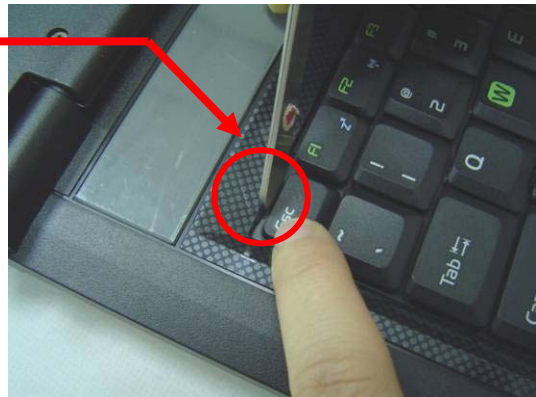
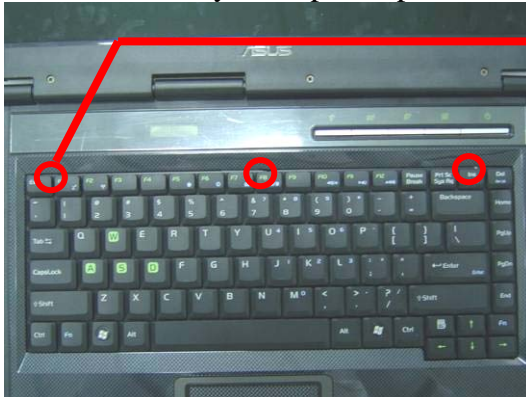
The illustration of below shows how to remove the keyboard

### Removing Keyboard

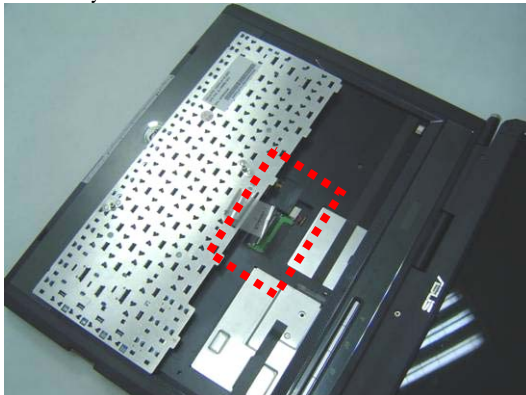
1. Remove 2 screw (M2\*5) here, and then turn over the notebook.



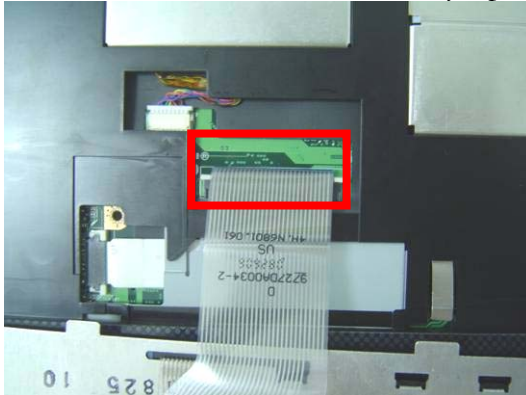
2. Push the 3 latches in (F1, F8, Ins) with a pair of tweezers or a single-slotted screwdriver and lift the keyboard plate up.



3. Lay the keyboard down over the Top case. **\*Do not remove the keyboard yet.** The keyboard cable is still attached.

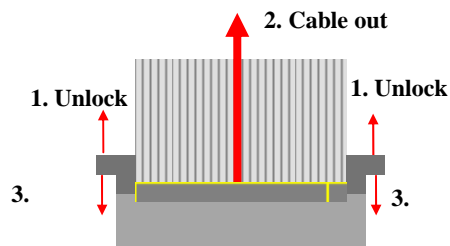


4. Disconnect the FPC connector by a pair of tweezers and then remove the keypad plate.



Removing Keyboard Cable

1. Use a flexible connector tool to unlock the cable connector on both ends (no. 1).
2. Carefully pull out the keyboard cable (no. 2) with a pair of tweezers.
3. Lock the connector (no. 3) again to avoid possible breakage.



### TOP CASE MODULE

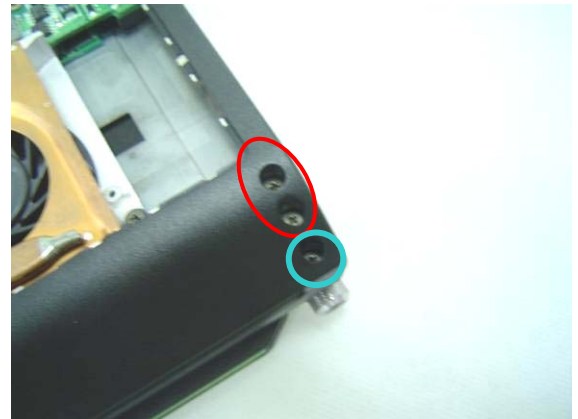
## Top Case Module

The illustrations below show how to disassemble and remove the top case module of the notebook. The module contains the top case itself.

### TOP CASE REMOVAL

Removing Top Case Module

1. Remove 6 screws (M2\*8; M2\*5) here





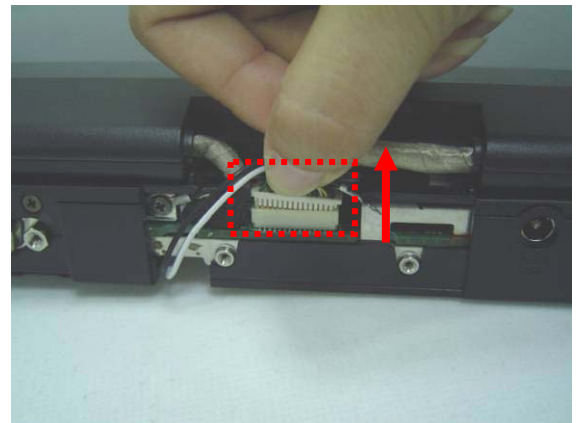
2. Remove the both hinge covers.



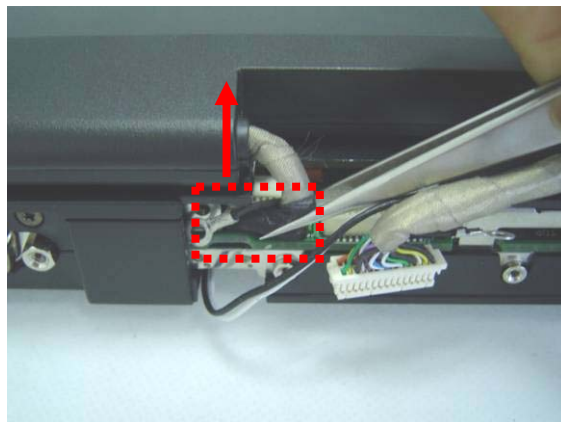
3. Remove 2 screws in hames cover, then take the hames cover away.



4. Remove 1 piece of tape fixing the table and then remove 1 screw here, and disconnect the LCD cable



5. Remove 1 screw here, and disconnect the cable.



6. Remove 2 screws on both end



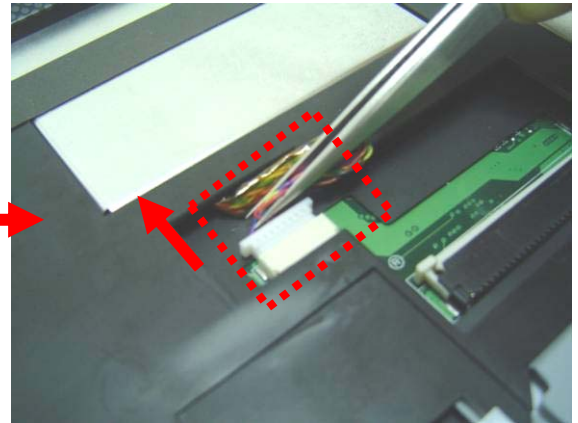
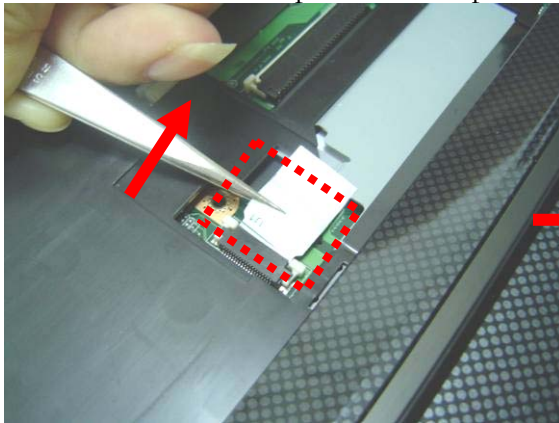
7. Remove 2 screws beside the system.



8. Open one latch before LCD and then separate LCD module from system.



9. Disconnect the touch pad cable with pair of tweezers.



## LCD MODULE

### LCD Module

*The illustrations below show how to remove and disassemble the LCD module. The module contains LCD panel, Inverter board, LCD bezel, LCD back cover.*

## LCD MODULE DISASSEMBLY

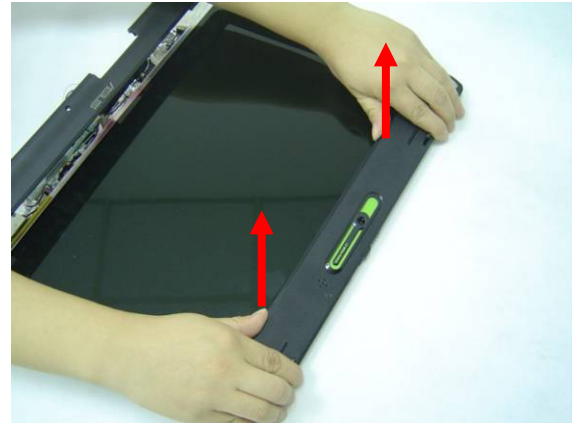
### Disassembling LCD Module

1. Remove 7 screws from LCD module.

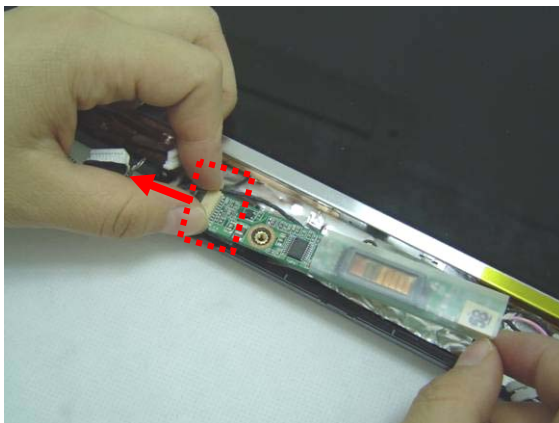
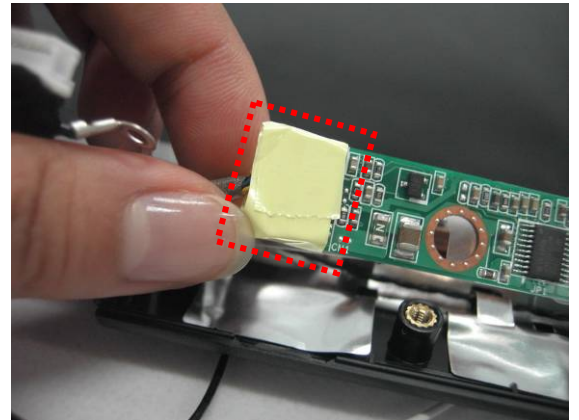
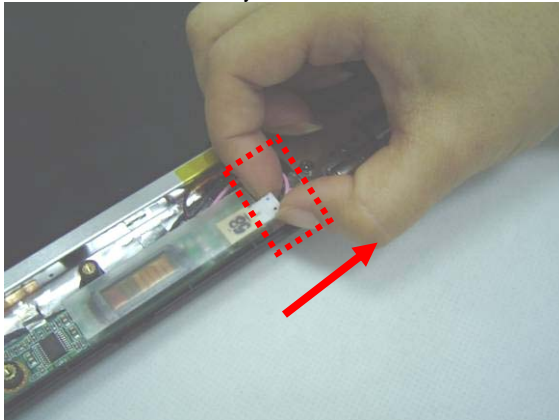




2. Prying the inside edges of the bezel, then separate it from LCD back cover and take LCD front bezel away.

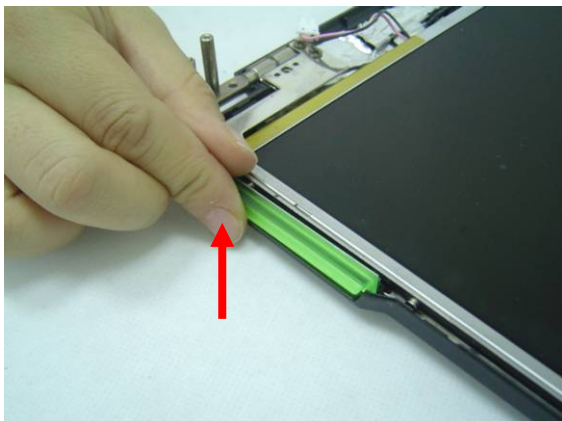


3. Disconnect LCD cable from the inverter board and softly lift the board off LCD back cover, then remove the tape pasting the other connector, and disconnect the inverter cable from the inverter board, finally remove the inverter board.





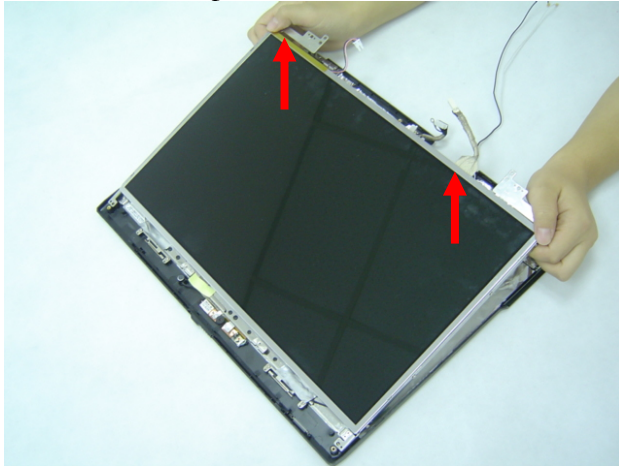
4. Remove the LED at both sides.



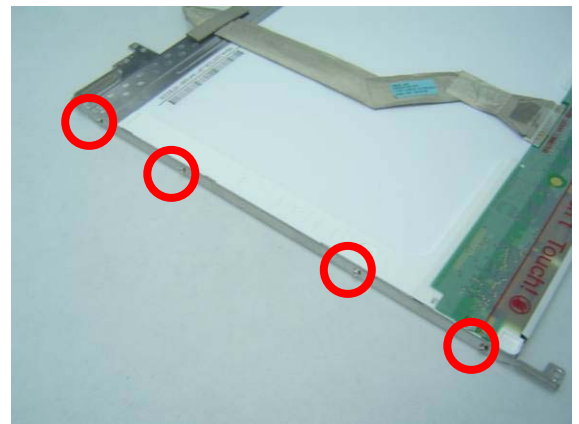
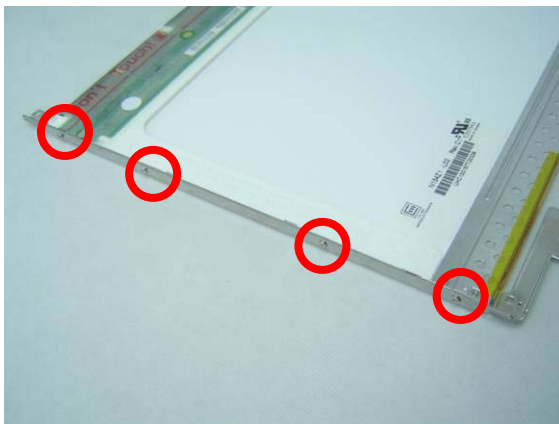
5. Remove 6 screws here



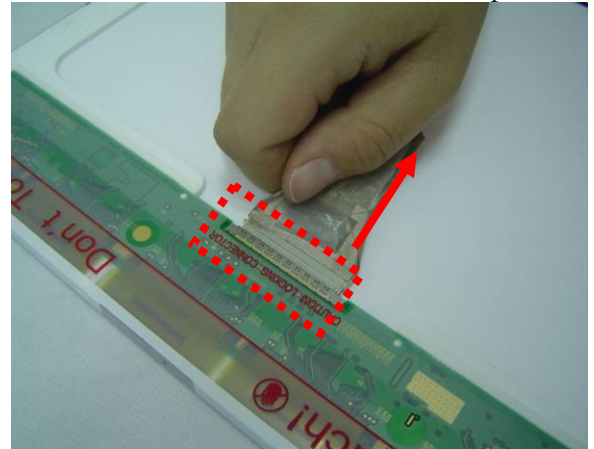
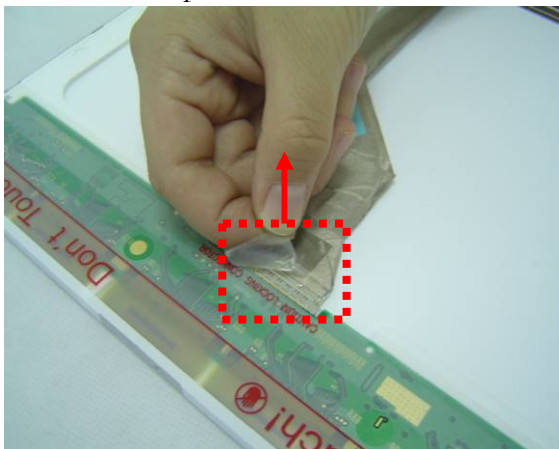
6. Take the LCD panel out of LCD module.



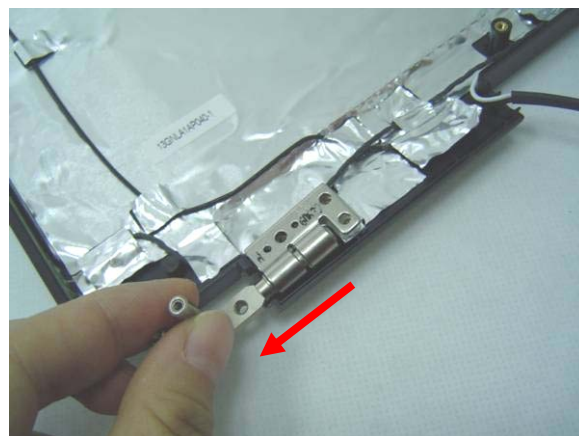
7. Finally, remove 4 screws on the right LCD bracket, and 4 screws on the left side to disassemble LCD brackets



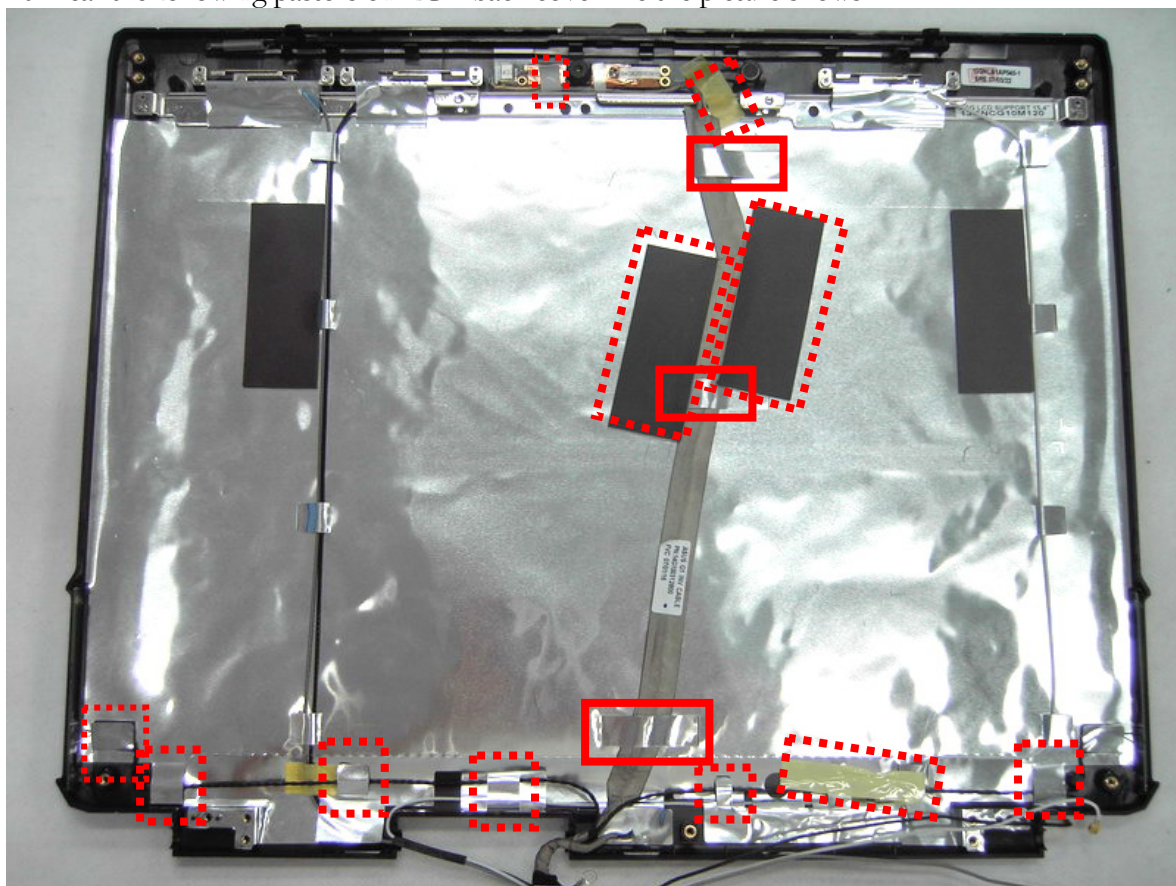
8. Remove the paster and disconnect the VDS cable, then take the VDS cable out of LCD panel.



9. Remove the right and left hinge.

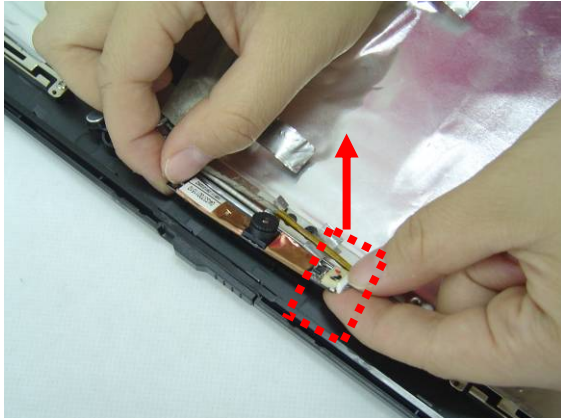


10. Tear the following pastors on LCD back cover like the picture shows.

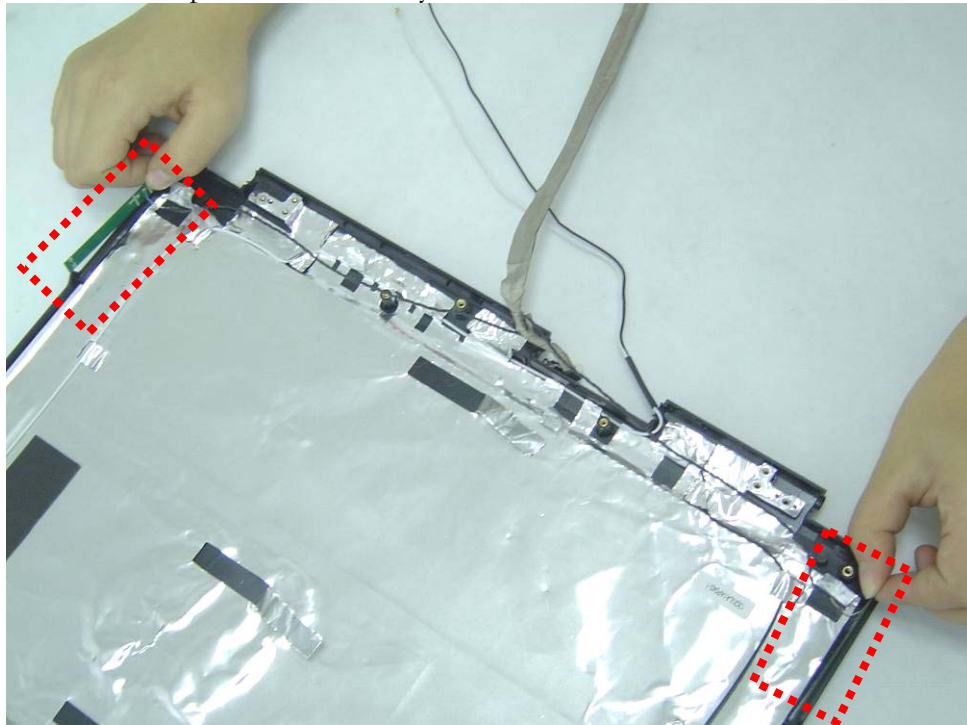




11. Take the camera out of LCD, and then remove camera module.

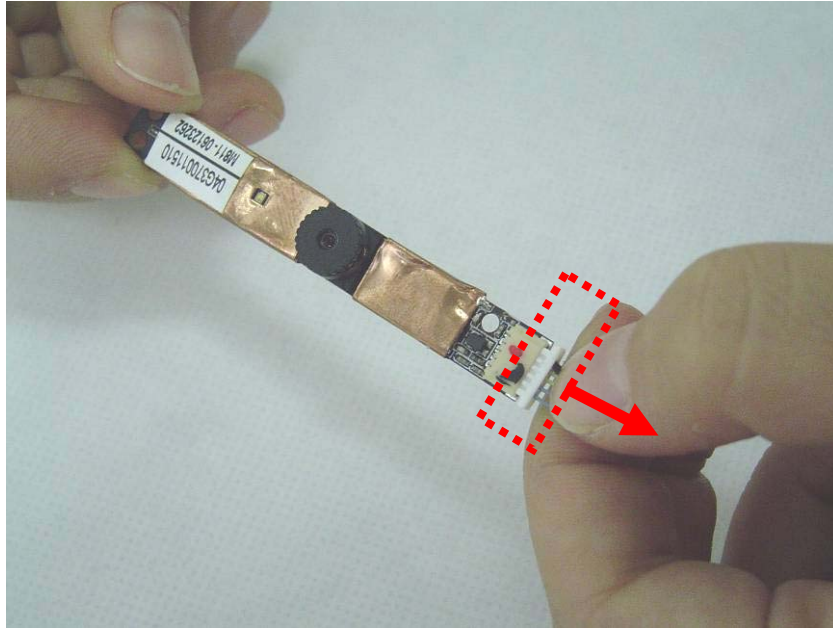


12. Remove the other paster and take away both LED board out of LCD cover.

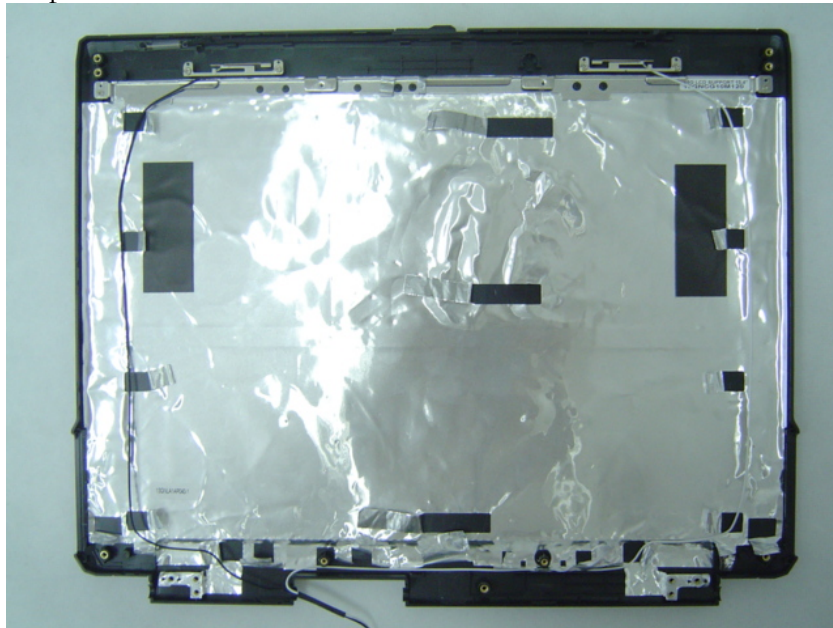




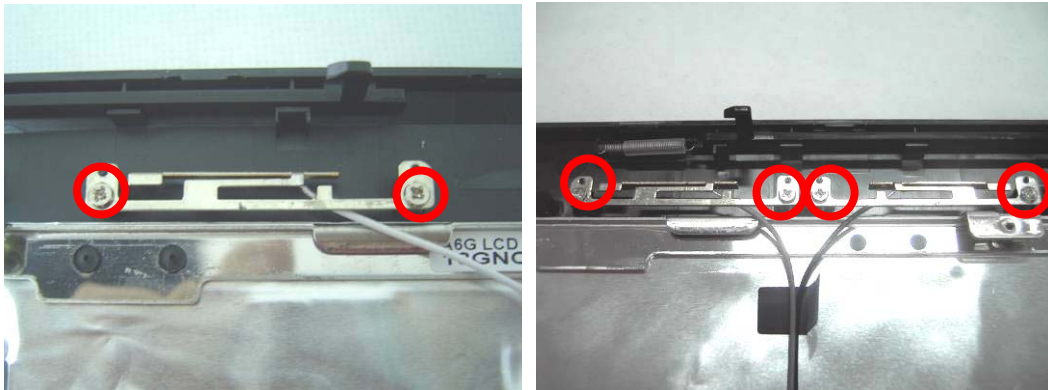
13. Disconnect the camera cable from camera.



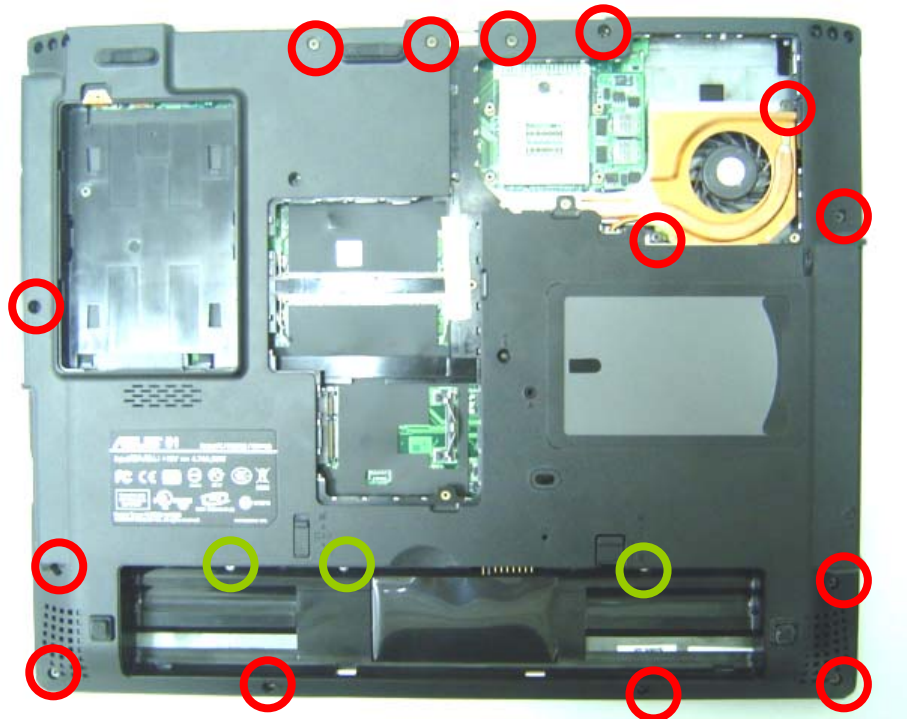
14. Remove all tapes on antenna cables.



15. Remove 2 screws on the white, grey and black antennas respectively, and then remove them from the LCD back cover.



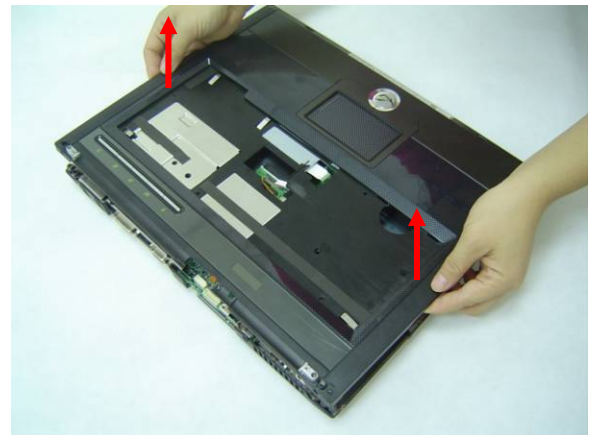
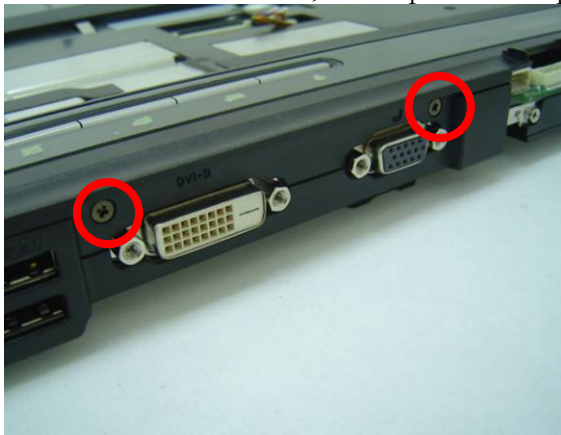
17. Remove 18 screws (M2\*5 M2\*4) from the bottom case.



18. Remove 1 screw from the top case.

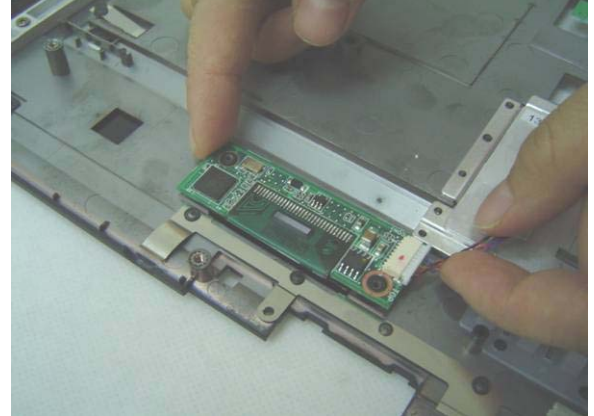
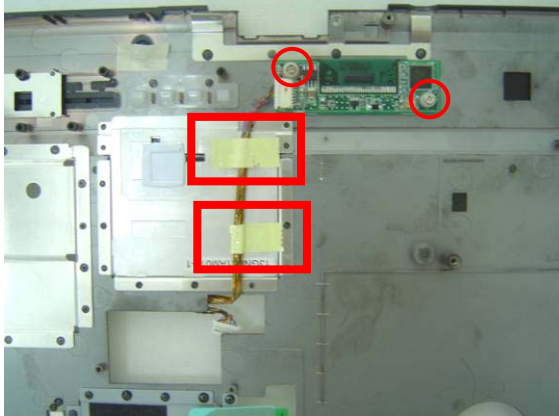


19. Remove 2 screws here, then separate the top case and the bottom case.

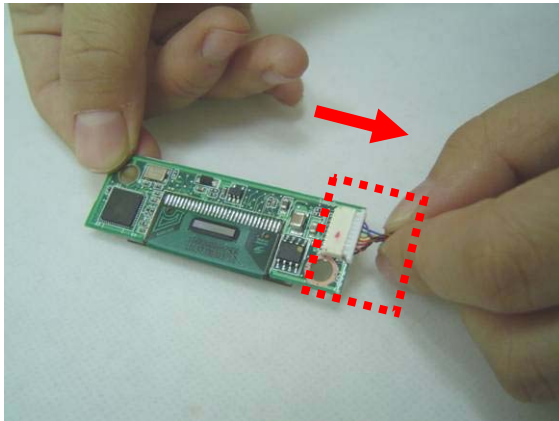




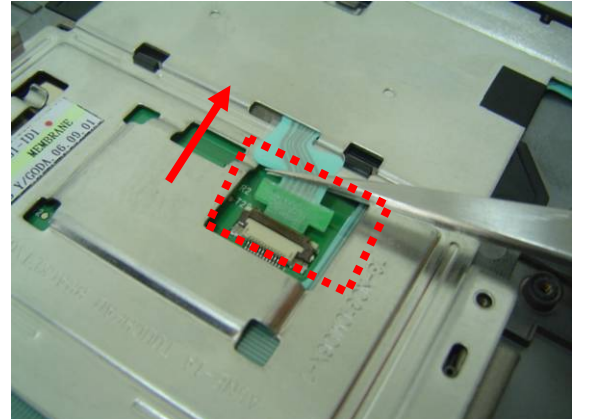
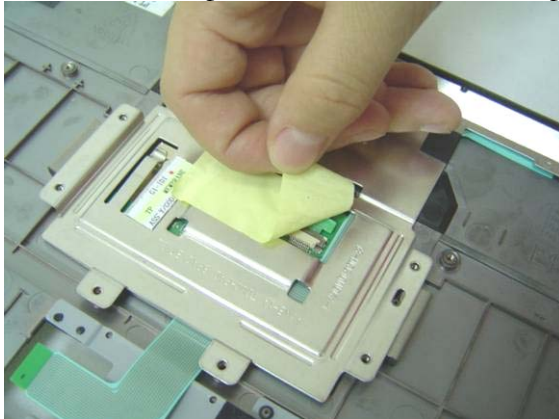
20. Tear of the tapes here, remove 2 screws on the LED board and then remove the LED board.



21. Disconnect the LED cable.

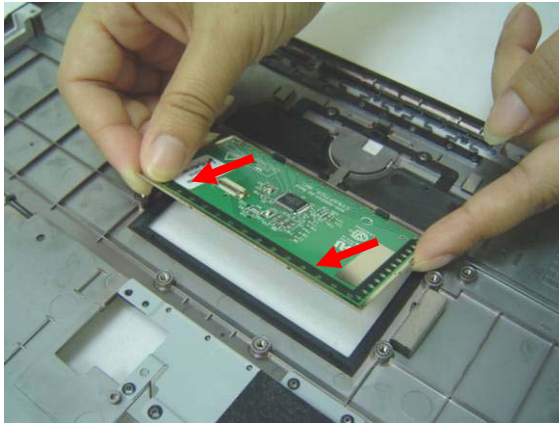
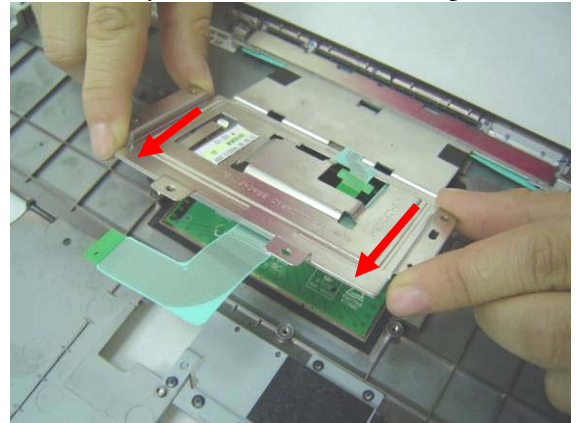
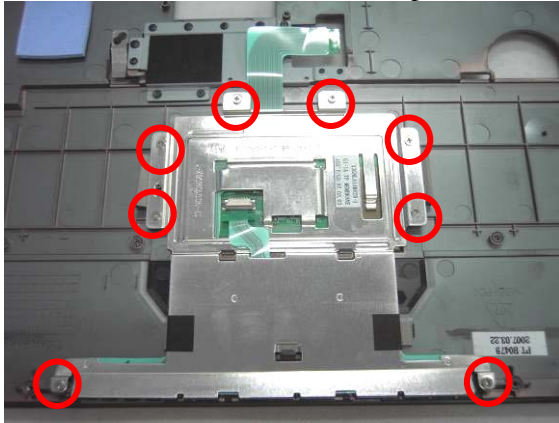


22. Tear of the tapes and disconnect the touchpad cable.

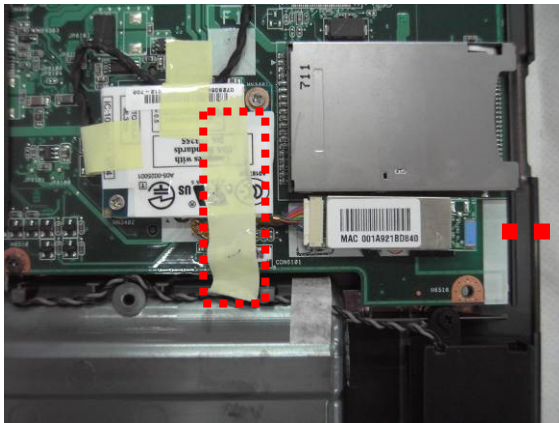




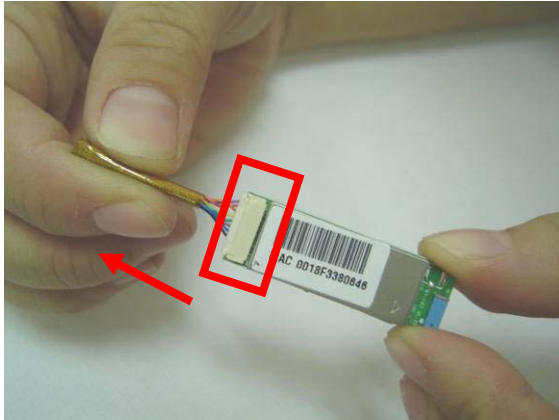
23. Remove 8 screws on the touchpad bracket and take it away, then remove the touch pad board.



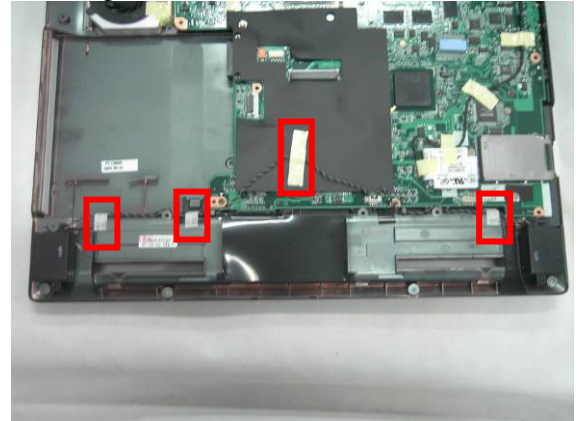
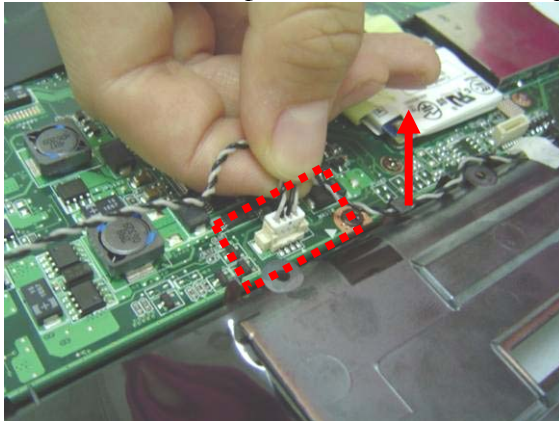
24. Remove 1 piece of tape on Bluetooth cable, disconnect it from the mother board and then remove the blue tooth module.



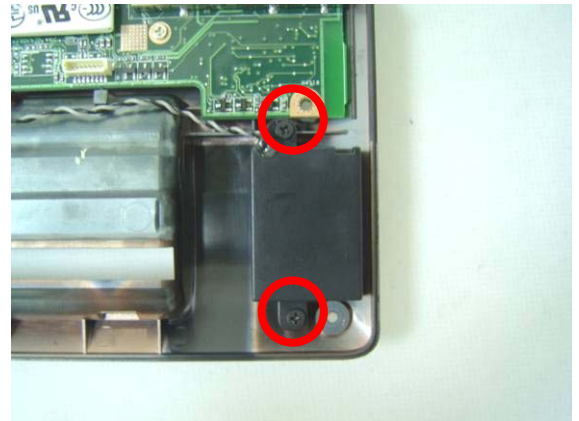
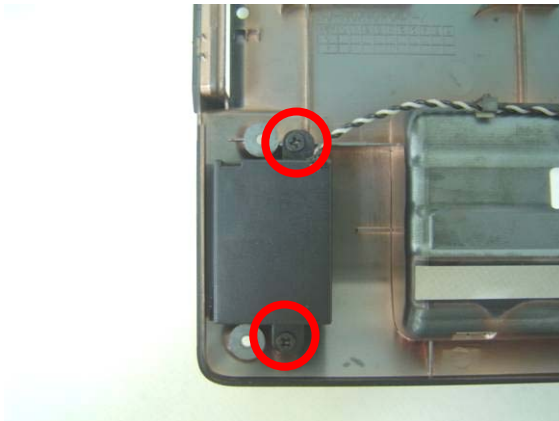
25. Disconnect the blue tooth cable.



26. Disconnect the speaker cable and tear of 3 pieces of tape.



27. Remove 4 screws here.



28. Take away the both speaker.




---

MOTHERBOARD

---

## Motherboard

*The illustrations below show how to disassemble and remove the Motherboard.*

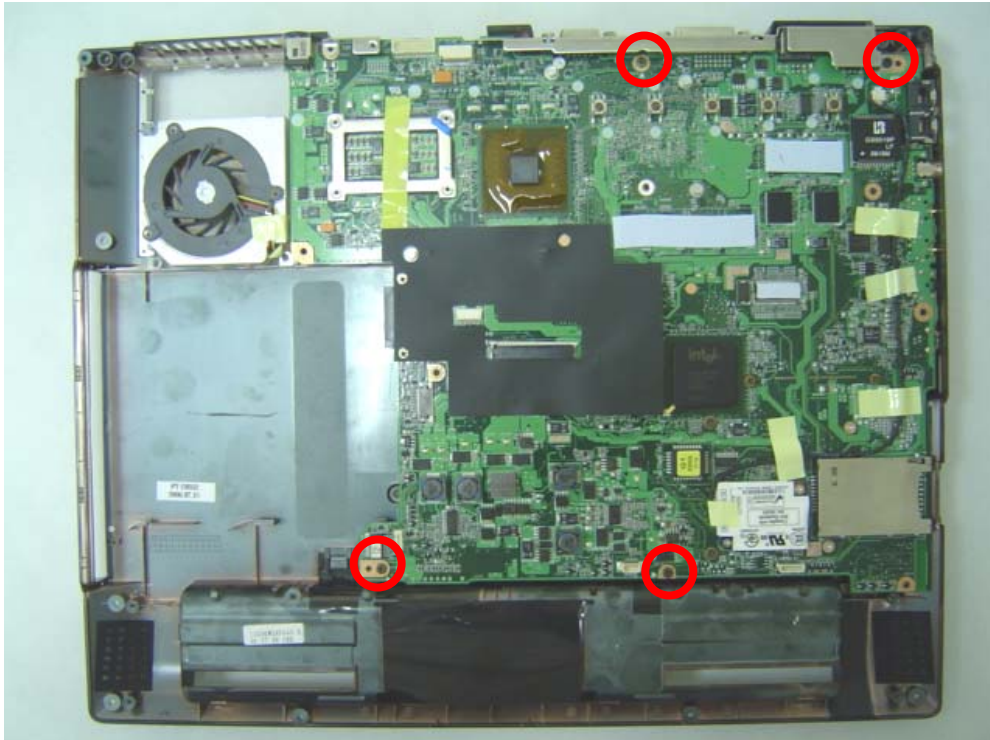
---

MOTHERBOARD  
REMOVAL

---

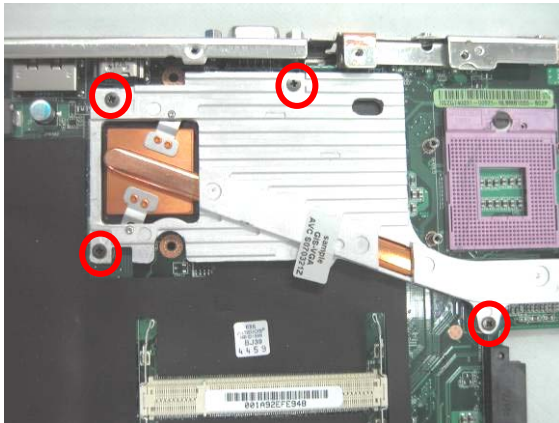
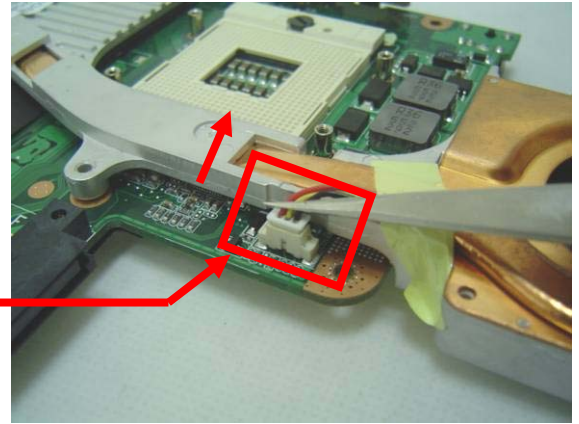
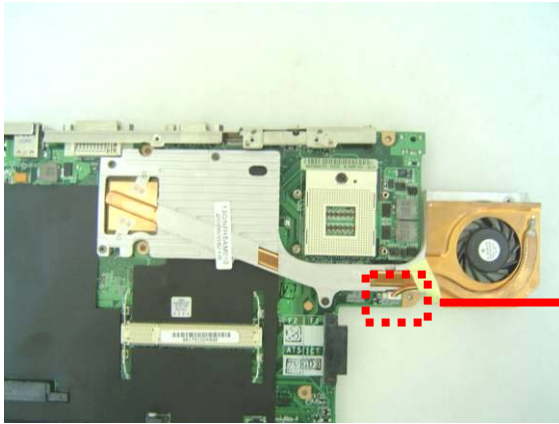
### Removing Motherboard

1. Remove 4 screws here on the mother board.





2. Disconnect the CPU fan cable and remove 4 screws securing the fan module, then remove the fan module from the mother board.



3. Remove 2 screws and 4 pieces of tape, and then disconnect the cable, take away the modem board.

